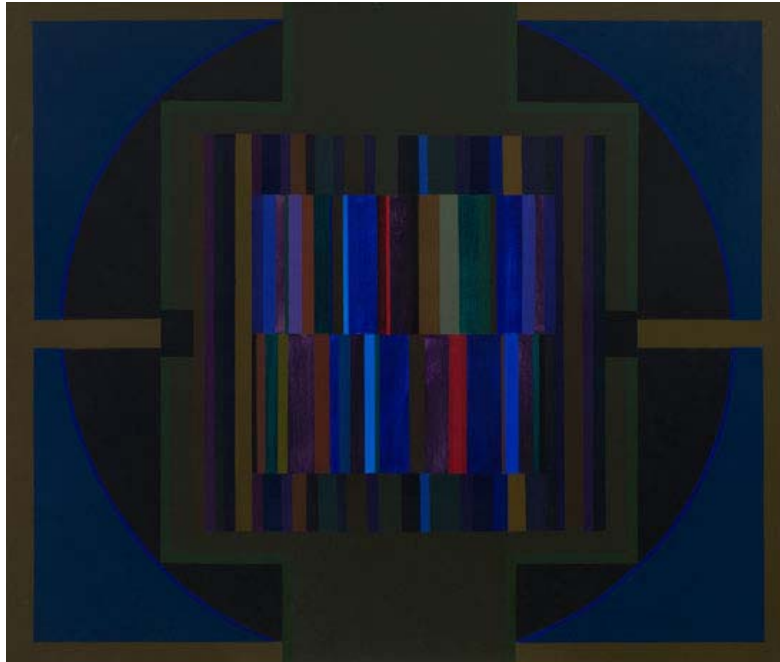


## NOVEMBER 2019 ONLINE SALE CATALOGUE



Opens: 07-Nov-2019 04:00:00 PM

Estimated closing time: 28-Nov-2019 03:00:00 PM  
(with 3 minutes extension until no further bids received)

Viewing: All works can be viewed on the Internet at [www.heffel.com](http://www.heffel.com) and at Heffel Gallery Limited, 2247 Granville Street, Vancouver, BC, or at Heffel Gallery Limited, 13 Hazelton Avenue, Toronto, ON, or at Gallerie Heffel Québec Ltée., 1840 rue Sherbrooke Ouest, Montreal, QC, Canada

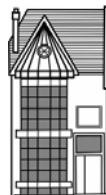
Note: Sale to be held through the Internet at [www.heffel.com](http://www.heffel.com).  
Any estimates for this sale are in Canadian Dollars.  
Telephone and absentee bids accepted.



### Heffel Gallery Limited

2247 Granville Street  
Vancouver, BC, V6H 3G1

Phone: 00 1 604 732 6505  
Mobile: 00 1 604 418 6505  
Fax: 00 1 604 732 4245  
Email: [mail@heffel.com](mailto:mail@heffel.com)



### Heffel Gallery Limited

13 Hazelton Avenue  
Toronto, ON, M5R 2E1

Phone: 00 1 416 961-6505  
Fax: 00 1 416 961-4245



### Heffel Fine Art Auctioneers

451 Daly Avenue  
Ottawa, ON, K1N 6E7

Phone: 00 1 613 230 6505  
Fax: 00 1 613 230 8884



### Galerie Heffel Québec Ltée.

1840 rue Sherbrooke Ouest  
Montreal, QC, H3H 1E4

Phone: 00 1 514 939-6505  
Fax: 00 1 514 939-1100



**201**

**MOLLY JOAN LAMB BOBAK**

BCSFA CGP CPE CSGA CSPWC RCA 1922 - 2014 Canadian

**The Sea Dragon (Fredericton Exhibition)**

oil on canvas

signed

40 x 48 inches 101.6 x 121.9 centimeters

Provenance: Estate of Molly and Bruno Bobak, Fredericton, NB

Exhibited:

Literature:

Starting Bid: \$18,000 CDN

Estimate: \$20,000 ~ \$30,000 CDN

Preview at: Heffel Montreal



**202**

**AGATHA (GATHIE) FALK**

BCSA OC 1928 - Canadian

**Night Sky 16**

oil on canvas

signed, titled and dated 1979 and on verso inscribed "16" and indistinctly

62 x 47 1/2 inches 157.5 x 120.6 centimeters

Provenance: Equinox Gallery, Vancouver

Acquired from the above by the present Private Collection, Vancouver Island, 1985

Exhibited:

Literature:

Starting Bid: \$9,000 CDN

Estimate: \$10,000 ~ \$15,000 CDN

Preview at: Heffel Vancouver



**203**

**MARCELLE FERRON**

AANFM AUTO CAS QMG RCA SAAVQ SAPQ 1924 - 2001 Canadian

**Sans titre**

oil on canvas on board

signed and on verso signed, dated 1956 and inscribed indistinctly

21 1/2 x 19 inches 54.6 x 48.3 centimeters

Provenance: Collection of Léon Bellefleur  
By descent to a Private Collection, England  
Sold sale of Post-War & Contemporary Art, Heffel Fine Art Auction House, November 22, 2012, lot 10  
Private Collection, Montreal

Exhibited:

Literature: Robert Enright, Marcelle Ferron: Monograph, 2008, page 10

After her studies at the École des beaux-arts in Quebec City and the École du Meuble in Montreal, Marcelle Ferron was introduced to the possibilities of abstraction by fellow painter Paul Émile Borduas. She eventually joined his entourage, a circle of artists that would later be known as the Automatists and who published the 1948 Refus Global manifesto. The Refus global signaled not only an important cultural shift in Quebec society, but also encouraged artists towards a more expressive and instinctive approach to technique and a liberation from figurative art. The restlessness and bravado of the Automatist movement are visible in this work that bridges two of Ferron's strongest periods. While drawing on the rhythmic staccatos of her 1950s pieces, this work also anticipates the more ample swathes of colour and larger formats that are iconic of her 1960s production. Here, Ferron carefully arranges an ensemble of richly-coloured planes, creating a luminous mosaic. To cite art critic and curator Robert Enright "From the beginning, she indicated an instinct for structure over gesture and a predilection for shape over line."

Starting Bid: \$12,000 CDN

Estimate: \$15,000 ~ \$25,000 CDN

Preview at: Heffel Montreal



**204**

**LISE GERVAIS**

QMG 1933 - 1998 Canadian

**Je dresse le bucher moral**

oil on canvas

signed and dated 1969 and on verso signed, titled, dated and inscribed "slide - 72 - 8"

48 x 48 inches 121.9 x 121.9 centimeters

Provenance: Private Collection, Montreal

Exhibited:

Literature:

Starting Bid: \$20,000 CDN

Estimate: \$20,000 ~ \$30,000 CDN

Preview at: Heffel Montreal



**205**

GRAHAM GILLMORE

YR 1963 - Canadian

**The Oranges of Consciousness in the Break Down of Bi Caramel Mind**

oil and enamel on board

signed and on verso signed, titled and dated 2001

60 x 48 inches 152.4 x 121.9 centimeters

Provenance: Galería Fúcares, Madrid  
Private Collection, Calgary

Exhibited: Galería Fúcares, Madrid, Graham Gillmore, 2002

Literature:

Please note: this work is unframed.

Starting Bid: \$8,000 CDN

Estimate: \$10,000 ~ \$15,000 CDN

Preview at: Heffel Calgary



**206**

WILLIAM KURELEK

ARCA OC OSA 1927 - 1977 Canadian

**Untitled (from the Burning Barn Series)**

oil on board

initialed and dated 1968 and on verso inscribed "# 37"

22 1/2 x 48 inches 57.2 x 121.9 centimeters

Provenance: Art Gallery of Edmonton  
Acquired from the above by a Private Collection, Quebec, circa 1969

Exhibited: Hart House Art Gallery, University of Toronto, The Burning Barn: 16 Paintings by William Kurelek, March 11 – 29, 1969

Literature:

This dramatic work was previously known to researchers of William Kurelek's work, but its location was unknown until now. It has been in the same collection since its acquisition from the Art Gallery of Edmonton in 1969. It is a painting full of meaning, and was part of the Burning Barn series. Kurelek was intensely religious, a product of his soulful self-searching – reflected in the title of a circa 1953 work – Where Am I? Who Am I? Why Am I? His beliefs formed the imagery in some of the most intense and significant works in his oeuvre. Kurelek was well aware of social issues in the 1960s. As Andrew Kear comments, "Kurelek was doing most of his work when globalization was just beginning. He was painting after the Cuban Missile Crisis, when people believed 'The end is nigh!'" The Burning Barn series was based on Kurelek's belief that humanity was as "a child playing in a burning barn, blind to its own mistakes and to the world's suffering." The artist's careful attention to detail is seen everywhere in the work, as well as his focus on telling the story – Christ stands over the man, who crouches humbly before him, clearly repentant. Although he is a farmer, not a part of urbanity, he is a part of the world – with Kurelek's admonition of what could happen without our intervention in the background. Kurelek's social critique is still just as relevant today as it was over 50 years ago.

This work is in the original frame made by Kurelek.

Starting Bid: \$20,000 CDN

Estimate: \$20,000 ~ \$30,000 CDN

Preview at: Heffel Montreal



**207**

**WILLIAM KURELEK**

ARCA OC OSA 1927 - 1977 Canadian

### **A Pig's Life**

mixed media on board

initialed and dated 1969 and on verso titled and dated on the gallery label

9 7/8 x 11 7/8 inches 25.1 x 30.2 centimeters

Provenance: The Isaacs Gallery Ltd., Toronto  
Private Collection, Ontario

Exhibited:

Literature:

Starting Bid: \$8,000 CDN

Estimate: \$10,000 ~ \$15,000 CDN

Preview at: Heffel – 13 Hazelton Ave Toronto



**208**

**JEAN ALBERT MCEWEN**

AANFM RCA 1923 - 1999 Canadian

### **Poème barbare**

oil on canvas

signed, titled and dated 1998 and on verso signed, titled and dated

40 x 40 inches 101.6 x 101.6 centimeters

Provenance: Galerie Lacerte, Quebec City  
Private Collection, Quebec City

Exhibited: Galerie Lacerte, Quebec City, Poèmes barbares, October - November 1998

Literature: Jacques-Bernard Roumanes, Jean McEwen: Le roi couleur, Vie des Arts, Vol. 42, No. 173, Winter 1998-1999, page 41

This stunning oil on canvas is from McEwen's final body of work, the Poèmes barbares. It was one of the artist's most important series, and spanned from 1997 to 1998. Comprised of about thirty works, the series juxtaposed unexpected combinations of saturated colours, inspired by the works of Paul Gauguin and the nabis painters. Poetry was another significant source of inspiration for McEwen; some might even say that before being a painter, he was a poet. The title of the series, Poèmes barbares, is a direct reference to a collection of poems of the same name by Leconte de Lisle, published in 1862. It also comes from an interaction the artist had with a collector. After much hesitation, a client decided not to acquire a piece by McEwen, arguing that his painting technique was "barbarous". Instead of taking offense, McEwen was quite amused and decided to reuse the term for this refined, complex, and furthest from barbarous, series.

The exhibition Untamed Colour, Celebrating Jean McEwen is currently on view at the Montreal Museum of Fine Arts from September 17, 2019 to February 2, 2020, and can be viewed by [clicking here](https://www.mbam.qc.ca/en/exhibitions/on-view/untamed-colour-celebrating-jean-mcewen).

Starting Bid: \$15,000 CDN

Estimate: \$15,000 ~ \$25,000 CDN

Preview at: Heffel Montreal



**209**

CHARLES PACHTER

OC 1942 - Canadian

### **The Painted Flag**

acrylic on canvas

signed and dated 2003 and on verso signed, titled and dated  
48 x 36 inches 121.9 x 91.4 centimeters

Provenance: Private Collection, Toronto

Exhibited:

Literature: Leonard Wise, Charles Pachter: Canada's Artist, 2017, pages 106-108

Charles Pachter's most celebrated and recognizable series, "Painted Flag", was started in the summer of 1980. After building an improvised flagpole at his Oro farm, he observed the different configurations produced by the rippling flag in rapid succession. Captivated by the endless variations, Pachter painted the Canadian flag hovering in the air, observed from various angles and distances with an emphasis on light and shadow.

His first exhibition of large flag paintings took place in 1981 in a remarkable space - a former supermarket transformed by the artist into what was probably the first art gallery to settle on Toronto's Queen Street West strip. Pachter has returned to this subject often since then, and his depictions of it have evolved into an iconic portrait of a national symbol. Literary critic David Staines aptly wrote, "Pachter devotes much of his work to an examination of national identity. Seizing upon commonplace objects in the Canadian landscape, the flag, the hockey player, the moose...he focuses on them with such relentless and varied intensity that he compels us to reconsider these familiar signposts in our collective memory."

Starting Bid: \$8,000 CDN

Estimate: \$15,000 ~ \$25,000 CDN

Preview at: Heffel - 13 Hazelton Ave Toronto



**210**

WILLIAM RONALD (BILL) REID

1920 - 1998 Canadian

### **Bear Earrings**

gold earrings

on verso signed, inscribed "Haida Art" and stamped  
1 1/8 x 0 1/2 inches 2.9 x 1.3 x 0.2 centimeters

Provenance: By descent to the present Private Collection, Vancouver

Exhibited:

Literature:

Starting Bid: \$14,000 CDN

Estimate: \$15,000 ~ \$25,000 CDN

Preview at: Heffel Vancouver



**211**

**JEAN PAUL RIOPELLE**

AUTO CAS OC QMG RCA SCA 1923 - 2002 Canadian

**Untitled, Nr. 33**

mixed media on paper

signed and dated 1964 and on verso titled on the gallery label  
26 x 19 1/2 inches 66 x 49.5 centimeters

Provenance: Pierre Matisse Gallery, New York  
Acquavella Modern Art, Nevada  
Private Collection, Toronto

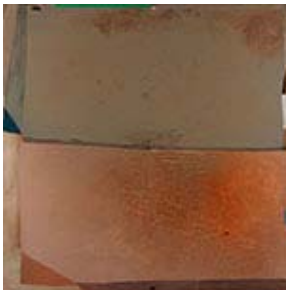
Exhibited:

Literature: Yseult Riopelle, Jean Paul Riopelle Catalogue Raisonné, Volume 3: 1960 - 1965, 2004, reproduced page 326 and listed page 496, catalogue #1964.054P.1964, titled Sans titre

Starting Bid: \$20,000 CDN

Estimate: \$20,000 ~ \$30,000 CDN

Preview at: Heffel - 13 Hazelton Ave Toronto



**212**

**OTTO DONALD ROGERS**

ARCA CPE 1935 - 2019 Canadian

**Untitled**

acrylic on canvas

on verso signed, dated 1982 and inscribed "2"  
72 x 72 inches 182.9 x 182.9 centimeters

Provenance: Sold sale of Fine Canadian Art, Heffel Fine Art Auction House, November 28, 2015, lot 615  
Private Collection, Calgary

Exhibited:

Literature:

Starting Bid: \$10,000 CDN

Estimate: \$10,000 ~ \$15,000 CDN

Preview at: Heffel Calgary



**213**

**ANTONY (TONY) SCHERMAN**

1950 - Canadian

**How I Yearn For You**

encaustic on canvas

on verso signed, titled and dated 1980 - 1981  
71 3/4 x 48 inches 182.2 x 121.9 centimeters

Provenance: Maxwell Davidson Gallery, New York  
Private Collection, Montreal

Exhibited:

Literature:

Starting Bid: \$8,000 CDN

Estimate: \$10,000 ~ \$15,000 CDN

Preview at: Heffel Montreal





**214**

ANTONY (TONY) SCHERMAN

1950 - Canadian

**The Comfort of Food: The Ideal Lobster No. 2**

encaustic on canvas

on verso signed, titled and dated 1988

50 x 60 inches 127 x 152.4 centimeters

Provenance: Sable-Castelli Gallery, Toronto  
Private Collection, Montreal

Exhibited:

Literature:

Please note: this work is unframed.

Starting Bid: \$8,000 CDN

Estimate: \$12,000 ~ \$16,000 CDN

Preview at: Heffel Montreal



**215**

ANTONY (TONY) SCHERMAN

1950 - Canadian

**Untitled**

encaustic on canvas

on verso signed, titled and dated 1987

60 x 36 inches 152.4 x 91.4 centimeters

Provenance: Private Collection, Montreal

Exhibited:

Literature:

Starting Bid: \$6,000 CDN

Estimate: \$10,000 ~ \$15,000 CDN

Preview at: Heffel Montreal



**216**

ANTONY (TONY) SCHERMAN

1950 - Canadian

**Margaret Brushing her Teeth**

encaustic on canvas

on verso signed, titled and dated 1984

54 x 72 inches 137.2 x 182.9 centimeters

Provenance: Waddington and Gorce Inc., Montreal  
Private Collection, Montreal

Exhibited:

Literature:

Starting Bid: \$8,000 CDN

Estimate: \$10,000 ~ \$15,000 CDN

Preview at: Heffel Montreal





**217**

**JACK LEONARD SHADBOLT**

BCSFA CGP CSPWC OC RCA 1909 - 1998 Canadian

**Sea Theme**

acrylic on canvas

signed and dated 1989 and on verso signed, titled and dated  
48 7/8 x 40 inches 124.1 x 101.6 centimeters

Provenance: Equinox Gallery, Vancouver  
The Isman Collection, Vancouver  
Sold sale of Canadian Post-War & Contemporary Art, Heffel Fine Art Auction House,  
May 17, 2012, lot 82  
Private Collection, Montreal

Exhibited:

Literature:

Starting Bid: \$15,000 CDN

Estimate: \$15,000 ~ \$20,000 CDN

Preview at: Heffel Montreal



**218**

**JACK LEONARD SHADBOLT**

BCSFA CGP CSPWC OC RCA 1909 - 1998 Canadian

**Forest Abstraction**

acrylic on burlap stitched to canvas

signed and dated 1984  
54 x 67 1/4 inches 137.2 x 170.8 centimeters

Provenance: Bau-Xi Gallery, Vancouver  
By descent to the present Private Collection, British Columbia

Exhibited:

Literature:

Starting Bid: \$17,000 CDN

Estimate: \$20,000 ~ \$30,000 CDN

Preview at: Heffel Vancouver



**219**

**JACK LEONARD SHADBOLT**

BCSFA CGP CSPWC OC RCA 1909 - 1998 Canadian

**Still Life at the Edge**

acrylic on canvas

signed and dated 1989 and on verso titled on the gallery label  
60 x 49 inches 152.4 x 124.5 centimeters

Provenance: Bau-Xi Gallery, Vancouver  
Private Collection, Calgary

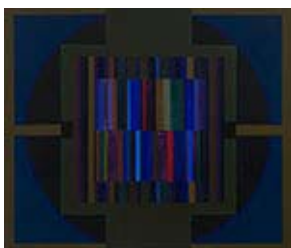
Exhibited:

Literature:

Starting Bid: \$10,000 CDN

Estimate: \$12,000 ~ \$16,000 CDN

Preview at: Heffel Calgary



**220**

**GORDON APPELBE SMITH**

BCSFA CGP CPE OC RCA 1919 - Canadian

### **Abstract**

acrylic on canvas

on verso signed

54 x 65 inches 137.2 x 165.1 centimeters

Provenance: The Douglas Gallery, Vancouver  
Private Collection, Vancouver

Exhibited:

Literature: Ian M. Thom et al., *Gordon Smith: Don't Look Back*, 2014, page 55

Around 1966, Gordon Smith turned from abstractions that were organic and free-form to hard-edge, geometric compositions. Although this change was seemingly overnight, one can track this transformation to Smith's interest in colour theory – he read Johannes Itten and Joseph Albers, and he also saw Guido Molinari's exhibition at the Vancouver Art Gallery in 1964. Smith is a modernist who shifts and evolves, absorbing influences and constantly challenging himself. Hard-edge painting had become the subject of critical debate internationally, and exhibitions such as Clement Greenberg's 1964 *Post-painterly Abstraction* and William Seitz's 1965 *The Responsive Eye* included this style of work. On the Vancouver scene, artists such as Brian Fisher, Gary Lee-Nova and Michael Morris began painting hard-edge works.

In hard-edge works such as this, Smith shows his mastery of form and inventiveness of palette – jewel tones of red, purple and emerald are paired with more serious, somber colours such as khaki and brown. *Abstract* is an outstanding example of this part of Smith's oeuvre, in which, as Roald Nasgaard wrote, "he dazzles the eyes and teases the mind with witty spatial contradictions, using the freshest of colours."

The Vancouver Art Gallery, Art Gallery of Greater Victoria and the Montreal Museum of Fine Arts have Smith's geometric abstractions in their collections.

Starting Bid: \$30,000 CDN

Estimate: \$35,000 ~ \$45,000 CDN

Preview at: Heffel Vancouver



**221**

**GORDON APPELBE SMITH**

BCSFA CGP CPE OC RCA 1919 - Canadian

### **Rock Face**

oil on board

signed and on verso signed, titled and titled *Painting* on the exhibition label and inscribed "\$250" on the exhibition label and with the artist's address

40 x 23 inches 101.6 x 58.4 centimeters

Provenance: By descent to the present Private Collection, British Columbia

Exhibited: Canadian Group of Painters, 1955

Literature:

Starting Bid: \$18,000 CDN

Estimate: \$20,000 ~ \$30,000 CDN

Preview at: Heffel Vancouver



**222**

GORDON APPELBE SMITH  
BCSFA CGP CPE OC RCA 1919 - Canadian

### **West Coast Beach**

oil on board

signed

14 x 16 inches 35.6 x 40.6 centimeters

Provenance: Private Collection, Vancouver

Exhibited:

Literature:

Starting Bid: \$9,000 CDN

Estimate: \$10,000 ~ \$15,000 CDN

Preview at: Heffel Vancouver



**301**

LÉON BELLEFLEUR  
AANFM CAS PY QMG 1910 - 2007 Canadian

### **Remous en mer**

oil on canvas

signed and dated 1983 and on verso signed, titled and dated

35 1/4 x 46 1/4 inches 89.5 x 117.5 centimeters

Provenance: Galerie Clarence Gagnon, Montreal

Acquired from the above by the present Private Collection, Montreal, 1990

Exhibited:

Literature:

Starting Bid: \$7,000 CDN

Estimate: \$8,000 ~ \$12,000 CDN

Preview at: Heffel Montreal



**302**

LÉON BELLEFLEUR  
AANFM CAS PY QMG 1910 - 2007 Canadian

### **Escale**

oil on canvas

signed and dated 1957 and on verso initialed, titled, dated and inscribed "8 3017 C"

11 3/4 x 14 1/8 inches 29.8 x 35.9 centimeters

Provenance: Private Collection, Montreal

Sold sale of Sotheby's Canada in association with Ritchie's, May 26, 2008, lot 55  
Private Collection, Toronto

Exhibited:

Literature:

Starting Bid: \$8,000 CDN

Estimate: \$9,000 ~ \$12,000 CDN

Preview at: Heffel - 13 Hazelton Ave Toronto



**303**

**MOLLY JOAN LAMB BOBAK**

BCSFA CGP CPE CSGA CSPWC RCA 1922 - 2014 Canadian

**Bouquet**

oil on canvas

signed and on verso titled and dated 2001 on the gallery label  
24 x 18 inches 61 x 45.7 centimeters

Provenance: Galerie Walter Klinkhoff Inc., Montreal  
Private Collection, Winnipeg  
Sold sale of Post-War & Contemporary Art, Heffel Fine Art Auction House, September 27, 2018, lot 505  
Private Collection, Toronto

Exhibited:

Literature:

Starting Bid: \$4,000 CDN

Estimate: \$5,000 ~ \$7,000 CDN

Preview at: Heffel - 13 Hazelton Ave Toronto



**304**

**BOBBIE BURGERS**

1973 - Canadian

**Organic Percussion**

oil on canvas

signed and dated 2005 and on verso signed, titled and dated  
48 x 60 inches 121.9 x 152.4 centimeters

Provenance: Private Collection, Vancouver  
Private Collection, Vancouver

Exhibited:

Literature:

Starting Bid: \$5,000 CDN

Estimate: \$7,000 ~ \$9,000 CDN

Preview at: Heffel Vancouver



**305**

**BOBBIE BURGERS**

1973 - Canadian

**Autumn Haze**

acrylic on canvas

initialed and dated 2000 and on verso signed twice, titled and dated  
15 x 16 1/2 inches 38.1 x 41.9 centimeters

Provenance: Private Collection, Vancouver

Exhibited:

Literature:

Starting Bid: \$2,000 CDN

Estimate: \$3,000 ~ \$4,000 CDN

Preview at: Heffel Vancouver



**306**

**BOBBIE BURGERS**

1973 - Canadian

**Dash**

acrylic on canvas

initialed and dated 1997 and on verso signed, titled and dated  
60 x 60 inches 152.4 x 152.4 centimeters

Provenance: Private Collection, Vancouver

Exhibited:

Literature:

Please note: this work is unframed.

Starting Bid: \$6,000 CDN

Estimate: \$7,000 ~ \$9,000 CDN

Preview at: Heffel Vancouver



**307**

**DENNIS EUGENE NORMAN BURTON**

1933 - 2013 Canadian

**Edge**

oil on board

signed and dated 1958 and on verso signed, titled, dated February 1958 and inscribed "never shown" and "58"

36 x 48 inches 91.4 x 121.9 centimeters

Provenance: Private Collection, Toronto

Exhibited:

Literature:

Starting Bid: \$7,500 CDN

Estimate: \$8,000 ~ \$10,000 CDN

Preview at: Heffel - 13 Hazelton Ave Toronto



**308**

**TOLLER CRANSTON**

OC 1949 - 2015 Canadian

**Floral Still Life**

acrylic on canvas

signed and dated 1999 and on verso inscribed "V12"  
54 x 60 inches 137.2 x 152.4 centimeters

Provenance: Private Collection, Vancouver

Exhibited:

Literature:

Please note: this work is unframed.

Starting Bid: \$1,500 CDN

Estimate: \$3,000 ~ \$5,000 CDN

Preview at: Heffel Vancouver



**309**

JAMIE EVRARD

1949 - Canadian

**Still Life with Delphiniums and Pears**

oil and acrylic on canvas

on verso signed and titled

36 x 34 inches 91.4 x 86.4 centimeters

Provenance: Private Collection, Vancouver

Exhibited:

Literature:

Please note: this work is unframed.

Starting Bid: \$800 CDN

Estimate: \$1,500 ~ \$2,000 CDN

Preview at: Heffel Vancouver



**310**

PAUL FOURNIER

1939 - Canadian

**Florida Mirror #1**

pastel and oil on paper

signed and dated 1983 and on verso titled and inscribed "Number 7757" on the gallery label

12 x 9 inches 30.5 x 22.9 centimeters

Provenance: Art Gallery of Alberta Art Rentals and Sales, Edmonton  
Private Collection, Vancouver

Exhibited:

Literature:

Starting Bid: \$500 CDN

Estimate: \$1,000 ~ \$2,000 CDN

Preview at: Heffel Vancouver



**311**

BETTY ROODISH GOODWIN

CPE 1923 - 2008 Canadian

**Untitled (From the Ladder Series)**

mixed media on Mylar

signed and dated 1996

17 x 11 inches 43.2 x 27.9 centimeters

Provenance: Private Collection, Ontario

Exhibited:

Literature:

Starting Bid: \$7,000 CDN

Estimate: \$8,000 ~ \$10,000 CDN

Preview at: Heffel - 13 Hazelton Ave Toronto





**312**

BETTY ROODISH GOODWIN

CPE 1923 - 2008 Canadian

**Untitled (From the Ladder Series)**

mixed media on Mylar

signed and dated 1996

17 x 11 inches 43.2 x 27.9 centimeters

Provenance: Private Collection, Ontario

Exhibited:

Literature:

Starting Bid: \$7,000 CDN

Estimate: \$8,000 ~ \$10,000 CDN

Preview at: Heffel – 13 Hazelton Ave Toronto



**313**

ILLINGWORTH HOLEY KERR

ARCA ASA BCSFA 1905 - 1989 Canadian

**September**

oil on board

dated 1933 and monogrammed and on verso signed, titled, dated and inscribed "Qu'Appelle and Wascana Valleys"

9 1/2 x 11 1/2 inches 24.1 x 29.2 centimeters

Provenance: A Gift from the Artist  
By descent to the present Private Collection, Saskatoon

Exhibited:

Literature:

Starting Bid: \$1,000 CDN

Estimate: \$2,000 ~ \$3,000 CDN

Preview at: Heffel Calgary



**314**

RITA LETENDRE

AANFM ARCA OC QMG 1928 - Canadian

**Sina**

acrylic on canvas

signed and dated 1972 and on verso signed, titled, dated and inscribed "No. 2"

19 3/4 x 60 inches 50.2 x 152.4 centimeters

Provenance: Gallery Moos, Toronto  
Private Collection, Toronto

Exhibited:

Literature:

Please note: this work is unframed.

Starting Bid: \$5,000 CDN

Estimate: \$6,000 ~ \$8,000 CDN

Preview at: Heffel – 13 Hazelton Ave Toronto





**315**

RITA LETENDRE

AANFM ARCA OC QMG 1928 - Canadian

### **Shvilim**

acrylic on canvas

signed and dated 1977 and on verso signed, titled and dated  
42 x 72 inches 106.7 x 182.9 centimeters

Provenance: Private Collection, Toronto

Exhibited:

Literature:

Please note: this work is unframed.

Starting Bid: \$5,000 CDN

Estimate: \$6,000 ~ \$8,000 CDN

Preview at: Heffel – 13 Hazelton Ave Toronto



**316**

MARCELLE MALTAIS

AANFM 1933 - 2018 Canadian

### **Sans titre**

oil on canvas

signed and dated 1962 and on verso inscribed "350"  
14 x 34 inches 35.6 x 86.4 centimeters

Provenance: Private Collection, Montreal

Exhibited:

Literature:

Starting Bid: \$2,000 CDN

Estimate: \$4,000 ~ \$6,000 CDN

Preview at: Heffel Montreal



**317**

GABOR L. NAGY

1945 - Canadian

### **Peonies for the Emperor's Table**

acrylic on canvas

signed and on verso titled, dated 2008-9-22 and inscribed "#29"  
36 x 48 inches 91.4 x 121.9 centimeters

Provenance: Private Collection, Calgary

Exhibited:

Literature:

Please note this work is unframed.

Starting Bid: \$2,500 CDN

Estimate: \$3,000 ~ \$4,000 CDN

Preview at: Heffel Calgary



**318**

**WILLIAM (BILL) PEREHUDOFF**

OC RCA 1918 - 2013 Canadian

**Untitled ACP-88-34**

acrylic on paper

signed and dated 1988 and on verso titled and numbered with the inventory number "DUG 1643" on the gallery label

5 3/4 x 7 1/2 inches 14.6 x 19.1 centimeters

Provenance: Douglas Udell Gallery, Edmonton  
Private Collection, Calgary

Exhibited:

Literature:

Starting Bid: \$1,000 CDN

Estimate: \$2,000 ~ \$3,000 CDN

Preview at: Heffel Calgary



**319**

**JOSEPH FRANCIS (JOE) PLASKETT**

BCSFA OC RCA 1918 - 2014 Canadian

**Compote, Vase, Flowers & Fruit**

oil on canvas

signed and dated 1997 and on verso titled

23 1/2 x 28 3/4 inches 59.7 x 73 centimeters

Provenance: Wallack Galleries, Ottawa  
Private Collection, Fredericton

Exhibited:

Literature:

Starting Bid: \$3,500 CDN

Estimate: \$4,000 ~ \$6,000 CDN

Preview at: Heffel Calgary



**320**

**ANNIE POOTOOGOOK**

1964 - 2016 Canadian

**Teenagers Room**

coloured pencil and ink on paper

signed in syllabics and on verso titled and dated 2007 on the gallery label

12 7/8 x 20 inches 32.7 x 50.8 centimeters

Provenance: Douglas Udell Gallery, Edmonton and Vancouver  
Private Collection, Vancouver

Exhibited:

Literature:

Starting Bid: \$800 CDN

Estimate: \$1,500 ~ \$2,000 CDN

Preview at: Heffel Vancouver



**321**

WILLIAM GOODRIDGE ROBERTS

CAS CGP CSGA CSPWC EGP OC OSA PY RCA 1904 - 1974 Canadian

### Landscape

oil on board

signed and dated 1952

25 x 32 inches 63.5 x 81.3 centimeters

Provenance: Private Collection, Montreal

Exhibited:

Literature:

Starting Bid: \$1,500 CDN

Estimate: \$3,000 ~ \$4,000 CDN

Preview at: Heffel Montreal



**322**

WILLIAM GOODRIDGE ROBERTS

CAS CGP CSGA CSPWC EGP OC OSA PY RCA 1904 - 1974 Canadian

### Flowers and Chair

oil on board

signed and on verso titled on the artist's label

28 1/2 x 21 1/2 inches 72.4 x 54.6 centimeters

Provenance: Waddington Galleries, Toronto

C. Laberge, Montreal

Sold sale of Fine Canadian Art, Heffel Fine Art Auction House, May 27, 2004, lot 109

Private Collection, British Columbia

Exhibited:

Literature:

Starting Bid: \$4,000 CDN

Estimate: \$5,000 ~ \$7,000 CDN

Preview at: Heffel Vancouver



**323**

WILLIAM GOODRIDGE ROBERTS

CAS CGP CSGA CSPWC EGP OC OSA PY RCA 1904 - 1974 Canadian

### Still Life

oil on board

signed and on verso titled and dated 1959 on a label

32 x 48 inches 81.3 x 121.9 centimeters

Provenance: Estate of Molly and Bruno Bobak, Fredericton, NB

Exhibited: UNB Art Centre, Fredericton, Paintings by Goodridge Roberts, February 22 to March 18, 1990

McMichael Canadian Art Collection, Goodridge Roberts Revealed, January 31 - June 14, 1998, traveling to the Montreal Museum of Fine Arts, April 1 - June 13, 1999, catalogue #104

Literature:

Starting Bid: \$8,000 CDN

Estimate: \$12,000 ~ \$16,000 CDN

Preview at: Heffel Montreal



**324**

JACK LEONARD SHADBOLT  
BCSFA CGP CSPWC OC RCA 1909 - 1998 Canadian

**Among the Marsh Stems**

ink and watercolour on paper

signed and dated 1959 and on verso signed, titled, dated and inscribed "461 N. Glyde St., Vancouver, BC"

21 1/4 x 30 inches 54 x 76.2 centimeters

Provenance: Acquired directly from the artist by a Private Collection, Victoria  
By descent to the present Private Collection, Vancouver

Exhibited:

Literature:

Starting Bid: \$3,000 CDN

Estimate: \$4,000 ~ \$6,000 CDN

Preview at: Heffel Vancouver



**325**

JACK LEONARD SHADBOLT  
BCSFA CGP CSPWC OC RCA 1909 - 1998 Canadian

**Lagoon / Untitled (verso)**

double-sided acrylic on paper

signed and dated 1950 and 1997 and on verso titled on the gallery labels

24 1/2 x 21 1/2 inches 62.2 x 54.6 centimeters

Provenance: Bau-Xi Gallery, Vancouver  
Private Collection, Vancouver

Exhibited:

Literature:

Starting Bid: \$5,000 CDN

Estimate: \$6,000 ~ \$8,000 CDN

Preview at: Heffel Vancouver



**326**

JACK LEONARD SHADBOLT  
BCSFA CGP CSPWC OC RCA 1909 - 1998 Canadian

**Dark Omen**

acrylic on illustration board

signed and dated 1979

40 x 58 1/2 inches 101.6 x 148.6 centimeters

Provenance: Private Collection, Vancouver Island

Exhibited:

Literature:

Starting Bid: \$6,000 CDN

Estimate: \$7,000 ~ \$9,000 CDN

Preview at: Heffel Vancouver



**327**

**WILLIAM TOWNSEND**

1909 - 1973 Canadian

**Cascade VII**

oil on canvas

on verso signed, titled and titled Cascade XII on the exhibition label, dated 1967 on a label and inscribed "Cascade 7" and "Dalhousie No. 12" on a label

30 x 36 inches 76.2 x 91.4 centimeters

Provenance: Estate of the Artist

Exhibited: Art Gallery of Alberta, Edmonton, William Townsend: Painting Alberta, Details of Canada, March 10 - July 1, 2018

Literature:

From the early 1950s, William Townsend spent most summers in Canada, teaching at the Banff School, eventually advising on, and contributing to, its development into the internationally significant Banff Centre of today. As an artist his encounter with Canada was transformative. He relished the struggle to understand the mountains around Banff, to reconcile the drama of their shifting appearances with the solidity of their forms. While Artist in Residence at the University of Alberta in Edmonton, 1963-4, the equivalent challenge was to understand the distortions and tricks of light, colour and distance on the developing cityscape. The largest of his Edmonton series, Southeast from 110th Street VI, is in the collection of the Canadian Embassy in Washington.

Starting Bid: \$2,000 CDN

Estimate: \$3,000 ~ \$4,000 CDN

Preview at: Heffel Vancouver



**328**

**WILLIAM TOWNSEND**

1909 - 1973 Canadian

**Jasper Avenue West III**

oil on canvas board

on verso signed, titled and dated 1963

22 x 28 inches 55.9 x 71.1 centimeters

Provenance: Estate of the Artist

Exhibited: Art Gallery of Alberta, Edmonton, William Townsend: Painting Alberta, Details of Canada, March 10 - July 1, 2018

Literature:

From the early 1950s, William Townsend spent most summers in Canada, teaching at the Banff School, eventually advising on, and contributing to, its development into the internationally significant Banff Centre of today. As an artist his encounter with Canada was transformative. He relished the struggle to understand the mountains around Banff, to reconcile the drama of their shifting appearances with the solidity of their forms. While Artist in Residence at the University of Alberta in Edmonton, 1963-4, the equivalent challenge was to understand the distortions and tricks of light, colour and distance on the developing cityscape. The largest of his Edmonton series, Southeast from 110th Street VI, is in the collection of the Canadian Embassy in Washington.

Starting Bid: \$500 CDN

Estimate: \$1,000 ~ \$2,000 CDN

Preview at: Heffel Vancouver



**401**

**JOHN WILLIAM (J.W.) BEATTY**

OSA RCA 1869 - 1941 Canadian

### **Field Hospital**

oil on board

signed

8 1/4 x 10 1/2 inches 21 x 26.7 centimeters

Provenance: Private Collection, Ontario

Exhibited:

Literature:

During World War I, J.W. Beatty was one of the first four official Canadian War Artists appointed by the Canadian War Memorials Fund. The other three were Frederick Varley, Maurice Cullen and Charles Simpson, each of whom were given the rank of captain and full military pay. After some time languishing in the Whitby base near Toronto, Beatty was shipped overseas to France along with Cullen. He produced a number of sketches of improvised field hospitals, such as this fine atmospheric painting, in which a striking church towers protectively above the tents. Despite the difficulties of war, Beatty depicted the charm of the village and the beauty of the surrounding landscape in his on-the-spot oil sketch, a vision of hope for the future.

Starting Bid: \$15,000 CDN

Estimate: \$20,000 ~ \$30,000 CDN

Preview at: Heffel – 13 Hazelton Ave Toronto



**402**

**ALFRED JOSEPH (A.J.) CASSON**

CGP CSPWC G7 OC POSA PRCA 1898 - 1992 Canadian

### **Headland - Lake of Two Rivers**

oil on board

signed and on verso signed, titled and inscribed "Algonquin Park"

9 1/2 x 11 1/4 inches 24.1 x 28.6 centimeters

Provenance: Acquired directly from the Artist by a Private Collection, Ontario  
Gifted to a Private Collection, Ontario  
Bequeathed to the present Private Collection, Ontario

Exhibited:

Literature:

Starting Bid: \$25,000 CDN

Estimate: \$25,000 ~ \$35,000 CDN

Preview at: Heffel – 13 Hazelton Ave Toronto



**403**

NORA FRANCES ELIZABETH COLLYER

BHG FCA 1898 - 1979 Canadian

**Looking up the Saguenay River, Pink Rock, Tadoussac, Quebec**

oil on canvas

signed and dated 1965 and on verso signed, titled and dated

24 x 28 inches 61 x 71.1 centimeters

Provenance: Galerie Walter Klinkhoff Inc., Montreal  
Private Collection, Vancouver

Exhibited:

Literature:

Starting Bid: \$15,000 CDN

Estimate: \$20,000 ~ \$30,000 CDN

Preview at: Heffel Vancouver



**404**

MARC-AURÈLE FORTIN

ARCA 1888 - 1970 Canadian

**Old Montreal, A Street Scene**

oil on board

signed and on verso dated circa 1921 on the gallery label and inscribed variously

6 3/4 x 8 1/2 inches 17.1 x 21.6 centimeters

Provenance: Collection of Dr. Paul Dumas, Quebec  
Galerie L'Art Français, Montreal  
Private Collection, Halifax

Exhibited:

Literature:

This work will be included in the forthcoming catalogue raisonné on the artist's work, #H-0410

Starting Bid: \$6,000 CDN

Estimate: \$8,000 ~ \$10,000 CDN

Preview at: Heffel - 13 Hazelton Ave Toronto



**405**

MARC-AURÈLE FORTIN

ARCA 1888 - 1970 Canadian

**Maisons, Ste-Rose, Scène d'automne**

oil on board

signed and on verso titled on the gallery labels, dated circa 1938 on the Dominion Corinth gallery label and inscribed "55838-OCJC" and "7689"

9 1/4 x 11 3/4 inches 23.5 x 29.8 centimeters

Provenance: Galerie L'Art Français, Montreal  
Dominion Corinth Galleries, Ottawa  
Private Collection, Quebec

Exhibited:

Literature:

This work will be included in the forthcoming catalogue raisonné on the artist's work, #H-1150

Starting Bid: \$8,000 CDN

Estimate: \$9,000 ~ \$12,000 CDN

Preview at: Heffel Montreal





**406**

MARC-AURÈLE FORTIN

ARCA 1888 - 1970 Canadian

### Port de Montréal

casein on board

signed and on verso inscribed "15830" and "578"

18 x 14 inches 45.7 x 35.6 centimeters

Provenance: Private Collection, Quebec

Exhibited:

Literature:

This work will be included in the forthcoming catalogue raisonné on the artist's work, #C-0054.

Starting Bid: \$15,000 CDN

Estimate: \$15,000 ~ \$20,000 CDN

Preview at: Heffel Montreal



**407**

CLARENCE ALPHONSE GAGNON

CAC RCA 1881 - 1942 Canadian

### Les Andély, Église St-Sauveur

oil on canvas

signed and dated 1909 and on verso titled on the gallery label and inscribed "JPV. 2667. A.F."

18 x 15 1/4 inches 45.7 x 38.7 centimeters

Provenance: Galerie L'Art Français, Montreal  
Galerie Valentin, Montreal  
Private Collection, Montreal

Exhibited:

Literature:

Starting Bid: \$12,000 CDN

Estimate: \$15,000 ~ \$25,000 CDN

Preview at: Heffel Montreal



**408**

FREDERICK STANLEY HAINES

CPE CSGA CSPWC POSA PRCA 1879 - 1960 Canadian

### Ploughing near Orangeville

oil on canvas board

signed and on verso titled and inscribed "\$250.00" and "F.S. Haines, 3 Colborne St." on the Canadian National Exhibition label

19 3/4 x 25 3/4 inches 50.2 x 65.4 centimeters

Provenance: Acquired from the Canadian National Exhibition, Toronto by the present Private Collection, PEI

Exhibited: Canadian National Exhibition, Toronto

Literature:

Starting Bid: \$6,000 CDN

Estimate: \$8,000 ~ \$10,000 CDN

Preview at: Heffel - 13 Hazelton Ave Toronto



**409**

EFA PRUDENCE HEWARD

BHG CAS CGP 1896 - 1947 Canadian

**Interior, St. Sauveur (Study for 'Rosaire')**

oil on board

on verso titled and dated circa 1935 on the Winchester Galleries label

12 x 14 1/4 inches 30.5 x 36.2 centimeters

Provenance: Galerie Walter Klinkhoff Inc., Montreal  
Winchester Galleries, Victoria  
Private Collection, Toronto

Exhibited:

Literature:

Starting Bid: \$10,000 CDN

Estimate: \$12,000 ~ \$16,000 CDN

Preview at: Heffel – 13 Hazelton Ave Toronto



**410**

EFA PRUDENCE HEWARD

BHG CAS CGP 1896 - 1947 Canadian

**Farm on the St. Lawrence Near Brockville**

oil on board

on verso titled on the gallery labels

12 1/4 x 14 inches 31.1 x 35.6 centimeters

Provenance: Galerie Walter Klinkhoff Inc., Montreal  
Winchester Galleries, Victoria  
Private Collection, Toronto

Exhibited:

Literature:

Starting Bid: \$9,000 CDN

Estimate: \$10,000 ~ \$15,000 CDN

Preview at: Heffel – 13 Hazelton Ave Toronto



**411**

CORNELIUS DAVID KRIEGHOFF

1815 - 1872 Canadian

**The Narrows, Lac St-Charles, Québec**

oil on canvas

signed and on verso titled and dated 1863

9 x 13 inches 22.9 x 33 centimeters

Provenance: Sold sale of Canadian Art, Bonhams Canada, November 30, 2009, lot 219  
Galerie Valentin, Montreal  
Private Collection, Montreal

Exhibited:

Literature: Marius Barbeau, Cornelius Krieghoff, Pioneer Painter of North America, 1934, listed page 121

Starting Bid: \$18,000 CDN

Estimate: \$20,000 ~ \$30,000 CDN

Preview at: Heffel Montreal



**412**

**HENRIETTA MABEL MAY**

ARCA BCSA BHG CGP 1877 - 1971 Canadian

**Old Houses, Baie-Saint-Paul / Untitled (verso)**

double-sided oil on panel

signed and on verso signed, titled and dated 1927 on the artist's label

9 x 12 1/2 inches 22.9 x 31.7 centimeters

Provenance: Galerie Walter Klinkhoff Inc., Montreal  
Private Collection, Toronto  
Sold sale of Fine Canadian Art, Heffel Fine Art Auction House, November 19, 2008,  
lot 166  
Private Collection, Vancouver

Exhibited:

Literature: Joyce Millar, *The Beaver Hall Group: Painting in Montreal, 1920 - 1940*, *Women's Art Journal*, 1992, page 7

Joy, light and an intimate sentimentality are expressed in the idyllic landscape paintings of Mabel May. Her position within the Beaver Hall Group throughout the decades of the twenties and thirties was important to the emergence of this predominantly female artistic group. At a time when many of members of the Group of Seven were taking the vast north as their subject impetus, the Beaver Hall Group was focusing on the Laurentians and Eastern townships of Quebec. The women of Beaver Hall expressed the beauty and romance of Montreal streets and felt that the old Quebec villages were deserving of attention. In a progressive and individual manner, though influenced by Group of Seven member A.Y. Jackson (who was also an early member of the Beaver Hall Group), each female artist aimed to express her own identity and artistic style in her work.

May's *Old Houses, Baie-Saint-Paul* embodies the style elements characteristic of a work from the Beaver Hall period. The compositional layout with rolling hills and pastel colour palette are May's strengths. In 1924, May spent part of her winter painting with both A.Y. Jackson and Randolph Hewton in the Baie-Saint-Paul area. Critics noted that works from this time were "lyrical expressions of winter, mountains and sky in beautifully muted tones." This panel is double-sided, with the verso depicting a complete study of a summer landscape with train tracks, a work which offers an insight into May's contribution to the evolution and adaptation of Impressionism in Canada. While spending time in Paris in her youth, she was undoubtedly moved by the artistic masters of the Impressionist movement. May was captivated by the Impressionists' modern subjects, such as steam engines and railways, during a time when industry and transportation were becoming increasingly important. As is evident in this summer landscape, May painted similar themes in the loose brush-stroke style made famous by Impressionist masters.

Starting Bid: \$15,000 CDN

Estimate: \$20,000 ~ \$25,000 CDN

Preview at: Heffel Vancouver



**413**

**DAVID BROWN MILNE**

CGP CSGA CSPWC 1882 - 1953 Canadian

### **St. Michael's Cathedral**

colour drypoint on Whatman wove paper

signed and editioned 30/53 and on verso titled, dated 1943 and inscribed "E-281" and variously by Douglas Duncan

7 x 8 1/8 inches 17.8 x 20.6 centimeters

Provenance: Private Collection, Ontario

Exhibited:

Literature: Rosemarie L. Tovell, Reflections in a Quiet Pool, The Prints of David Milne, National Gallery of Canada, 1980, pages 202 and 203, reproduced page 202

Tovell writes, "This is perhaps the masterpiece of all the colour drypoints. Milne has successfully married the medium to the subject. Drypoint line and burr elegantly and harmoniously articulate the style of neo-gothic architecture. The innately logical expression of the textural theme and mood is complimented and concluded by subtle variations of colouring and wiping. St. Michael's Cathedral, at Bond and Shuter streets in the heart of downtown Toronto, served as the subject for two watercolours...All told, Milne pulled sixty impressions of this print. Fifty-three were selected for publication and the remainder, save two unsigned cancelled proofs, were destroyed. This is the second of two prints for which Douglas Duncan's state descriptions have survived the discovery of working proofs. The edition, according to states, breaks down as follows: State I, 1/53, State II, 2/53, State III, 3/53, State IV, 4/53 - 13/53, State V, 14/53 - 24/53 and one cancelled proof; State VI, 25/53; and State VII, 26/53 - 53/53 and one cancelled proof. Duncan sold impressions of States IV - VII, with the exception of the sole State VI impression. St. Michael's Cathedral is the last of Milne's published prints." As such, this beautiful drypoint is State VII.

Starting Bid: \$13,000 CDN

Estimate: \$15,000 ~ \$25,000 CDN

Preview at: Heffel - 13 Hazelton Ave Toronto



**414**

**ROBERT WAKEHAM PILOT**

CGP OSA PRCA 1898 - 1967 Canadian

### **Ferme**

oil on canvas

signed and dated 1937 and on verso inscribed "A1194"

18 x 24 inches 45.7 x 61 centimeters

Provenance: Dominion Gallery, Montreal  
Private Collection, Montreal

Exhibited:

Literature:

Starting Bid: \$6,000 CDN

Estimate: \$10,000 ~ \$15,000 CDN

Preview at: Heffel Montreal



**415**

ROBERT WAKEHAM PILOT  
CGP OSA PRCA 1898 - 1967 Canadian

**Pointe-au-Pic, View from Cabot Point**

oil on canvas

signed and on verso titled on the gallery label and dated July 15, 1962  
19 x 24 inches 48.3 x 61 centimeters

Provenance: Galerie Walter Klinkhoff Inc., Montreal  
Private Collection, Ontario

Exhibited:

Literature:

Starting Bid: \$6,000 CDN

Estimate: \$8,000 ~ \$10,000 CDN

Preview at: Heffel – 13 Hazelton Ave Toronto



**416**

ROBERT WAKEHAM PILOT  
CGP OSA PRCA 1898 - 1967 Canadian

**Winter, Beauré**

oil on canvas

signed and on verso signed, titled and inscribed "7430"  
14 x 18 inches 35.6 x 45.7 centimeters

Provenance: Private Collection, Montreal

Exhibited:

Literature:

Starting Bid: \$10,000 CDN

Estimate: \$10,000 ~ \$15,000 CDN

Preview at: Heffel Montreal



**417**

ROBERT WAKEHAM PILOT  
CGP OSA PRCA 1898 - 1967 Canadian

**The Pond, Ste. Agathe**

oil on board

signed and on verso signed twice, titled, dated 1946 twice and inscribed "24"  
12 1/2 x 16 3/4 inches 31.8 x 42.5 centimeters

Provenance: Collector's Gallery, Montreal  
Private Collection, Vancouver

Exhibited:

Literature:

Starting Bid: \$5,000 CDN

Estimate: \$8,000 ~ \$12,000 CDN

Preview at: Heffel Vancouver



**418**

ROBERT WAKEHAM PILOT  
CGP OSA PRCA 1898 - 1967 Canadian

### **Winter Farms**

oil on canvas

signed and on verso inscribed variously  
18 x 24 inches 45.7 x 61 centimeters

Provenance: Private Collection, Vancouver  
Exhibited:  
Literature:

Starting Bid: \$10,000 CDN  
Estimate: \$15,000 ~ \$25,000 CDN  
Preview at: Heffel Vancouver



**419**

ROBERT WAKEHAM PILOT  
CGP OSA PRCA 1898 - 1967 Canadian

### **Winter**

oil on canvas

signed  
16 x 20 1/4 inches 40.6 x 51.4 centimeters

Provenance: Private Collection, Montreal  
Exhibited:  
Literature:

Starting Bid: \$18,000 CDN  
Estimate: \$20,000 ~ \$30,000 CDN  
Preview at: Heffel Montreal



**420**

ALBERT HENRY ROBINSON  
CGP RCA 1881 - 1956 Canadian

### **The Red Canoe / Sunset (verso)**

double-sided oil on board

signed and dated 1920 and on verso signed and dated 1910  
8 1/2 x 10 inches 21.6 x 25.4 centimeters

Provenance: Private Collection, Ontario  
Exhibited:  
Literature:

Starting Bid: \$9,000 CDN  
Estimate: \$10,000 ~ \$15,000 CDN  
Preview at: Heffel - 13 Hazelton Ave Toronto



**421**

ANNE DOUGLAS SAVAGE

BHG CGP 1896 - 1971 Canadian

**House in the Hills / Trees and Hills (verso)**

double-sided oil on board

signed

15 3/4 x 17 3/4 inches 40 x 45.1 centimeters

Provenance: Private Collection, Toronto

Exhibited:

Literature:

Starting Bid: \$10,000 CDN

Estimate: \$12,000 ~ \$16,000 CDN

Preview at: Heffel – 13 Hazelton Ave Toronto



**501**

JOHN WILLIAM (J.W.) BEATTY

OSA RCA 1869 - 1941 Canadian

**Canadian Landscape**

oil on canvas board

on verso signed, titled and dated December 22, 1930 on the gallery label

9 3/4 x 13 3/4 inches 24.8 x 34.9 centimeters

Provenance: Jenkins Art Galleries, Toronto  
Private Collection, Ontario

Exhibited:

Literature:

Elements of this 1930 painting by J.W. Beatty bear the hallmarks of a much earlier period of the artist's work. During his travels in Europe from 1906 to 1909, he became influenced by the Barbizon School of France, which deeply affected his style and colour choices. This was especially evident in his works produced in Belgium circa 1908, to which our later work bears a similarity in the dark and earthy palette.

Starting Bid: \$3,500 CDN

Estimate: \$5,000 ~ \$7,000 CDN

Preview at: Heffel – 13 Hazelton Ave Toronto





**502**

FREDERIC MARLETT BELL-SMITH

OSA RCA SCA 1846 - 1923 Canadian

**Sunset on the Hermit Range, Glacier BC**

oil on board

signed and on verso titled, dated circa 1895 on the gallery label and inscribed "7473"

9 1/2 x 12 inches 24.1 x 30.5 centimeters

Provenance: Masters Gallery Ltd., Calgary  
By descent to the present Private Estate, Calgary

Exhibited:

Literature:

Starting Bid: \$2,500 CDN

Estimate: \$6,000 ~ \$8,000 CDN

Preview at: Heffel Calgary



**503**

WILLIAM BRYMNER

CAC OSA PRCA RCA 1855 - 1925 Canadian

**Camp in the Rockies**

oil on canvas board

signed faintly

15 1/2 x 21 1/2 inches 39.4 x 54.6 centimeters

Provenance: Collection of the Artist  
By descent to a Private Collection, Victoria  
Sold sale of Fine Canadian Art, Heffel Fine Art Auction House, May 2, 2002, lot 108  
Private Collection, Vancouver

Exhibited:

Literature:

Starting Bid: \$3,000 CDN

Estimate: \$4,000 ~ \$6,000 CDN

Preview at: Heffel Vancouver



**504**

PAUL ARCHIBALD OCTAVE CARON

CPE CSGA RCA 1874 - 1941 Canadian

**New Year's Greetings, A Laurentian Scene, Quebec**

oil on canvas

signed and on verso signed, titled and dated 1938

16 x 22 inches 40.6 x 55.9 centimeters

Provenance: Continental Galleries of Fine Art, Montreal  
Masters Gallery Ltd., Calgary  
Acquired from the above by the present Private Collection, British Columbia, 1998

Exhibited:

Literature:

Starting Bid: \$5,000 CDN

Estimate: \$6,000 ~ \$8,000 CDN

Preview at: Heffel Vancouver



**505**

HORACE CHAMPAGNE

PSA PSC 1937 - Canadian

### **Riders on the Storm**

pastel on paper

signed and initialed and on verso signed, titled and dated 2007 on the certificate of authenticity

16 x 24 1/2 inches 40.6 x 62.2 centimeters

Provenance: Masters Gallery Ltd., Calgary  
Private Collection, Calgary

Exhibited:

Literature:

Starting Bid: \$2,500 CDN

Estimate: \$3,000 ~ \$4,000 CDN

Preview at: Heffel Calgary



**506**

BENJAMIN CHEE CHEE

1944 - 1977 Canadian

### **Two Geese**

acrylic on paper

signed and dated 1977

22 1/2 x 30 inches 57.2 x 76.2 centimeters

Provenance: Marion Scott Gallery, Vancouver  
Private Collection, Arizona

Exhibited:

Literature:

Please note: this work is unframed.

Starting Bid: \$4,000 CDN

Estimate: \$5,000 ~ \$7,000 CDN

Preview at: Heffel Vancouver



**507**

WILLIAM HENRY CLAPP

RCA 1879 - 1954 Canadian

### **Road Through Grove**

oil on board

signed and dated 1942 and on verso titled on a label and inscribed "EL 58.63.284" and "396/907 7399 175" on a label

15 x 18 inches 38.1 x 45.7 centimeters

Provenance: Maxwell Galleries Ltd., California  
Private Collection, California

Exhibited:

Literature:

Starting Bid: \$2,000 CDN

Estimate: \$3,000 ~ \$4,000 CDN

Preview at: Heffel Vancouver



**508**

FREDERICK SIMPSON COBURN

AAM RCA 1871 - 1960 Canadian

### **Hauling Logs**

oil on canvas

signed and dated 1943

21 x 28 1/2 inches 53.3 x 72.4 centimeters

Provenance: Private Collection, Montreal

Exhibited:

Literature:

Starting Bid: \$3,000 CDN

Estimate: \$5,000 ~ \$7,000 CDN

Preview at: Heffel Montreal



**509**

FREDERICK SIMPSON COBURN

AAM RCA 1871 - 1960 Canadian

### **Hauling Logs, Winter**

oil on canvas

signed and dated 1945 and on verso titled and dated on the gallery label

14 1/4 x 20 1/4 inches 36.2 x 51.4 centimeters

Provenance: Rumi Galleries, Ontario  
Private Collection, Ontario

Exhibited:

Literature:

Starting Bid: \$4,000 CDN

Estimate: \$5,000 ~ \$7,000 CDN

Preview at: Heffel - 13 Hazelton Ave Toronto



**510**

MARC-AURÈLE FORTIN

ARCA 1888 - 1970 Canadian

### **Study of a Tree**

oil on board

signed and on verso titled on the gallery label and inscribed "#2080" / "change material" / "764" and "4"

7 x 8 1/2 inches 17.8 x 21.6 centimeters

Provenance: Kastel Gallery Inc., Montreal  
Private Collection, Ontario

Exhibited:

Literature:

This work will be included in the forthcoming catalogue raisonné on the artist's work, #H-1139.

Starting Bid: \$3,000 CDN

Estimate: \$4,000 ~ \$6,000 CDN

Preview at: Heffel - 13 Hazelton Ave Toronto



**511**

MARC-AURÈLE FORTIN

ARCA 1888 - 1970 Canadian

### **Le village de Perçé**

watercolour and charcoal on paper

signed and on verso signed, titled, dated circa 1940 on the gallery label and inscribed "Collection L.L. Lanois" and "55939"

7 1/2 x 10 1/2 inches 19.1 x 26.7 centimeters

Provenance: Galerie L'Art français, Montreal  
Acquired from the above by the present Private Collection, Montreal

Exhibited:

Literature:

This work will be included in the forthcoming catalogue raisonné on the artist's work, #A-0430

Starting Bid: \$4,000 CDN

Estimate: \$5,000 ~ \$7,000 CDN

Preview at: Heffel Montreal



**512**

HENRY GEORGE GLYDE

ASA CSGA FCA PDCC RCA 1906 - 1998 Canadian

### **Off Piers Island, Swartz Bay, BC**

oil on canvas board

signed and on verso signed, titled and dated 1981

16 x 20 inches 40.6 x 50.8 centimeters

Provenance: Masters Gallery Ltd., Calgary  
Private Collection, British Columbia

Exhibited:

Literature:

Starting Bid: \$3,000 CDN

Estimate: \$4,000 ~ \$6,000 CDN

Preview at: Heffel Vancouver



**513**

BESS LARKIN HOUSSER HARRIS

BCSFA RCA 1890 - 1969 Canadian

### **Mountains and Larch**

oil on board

on verso signed, titled and inscribed "Price \$40.00" on a label

12 x 15 inches 30.5 x 38.1 centimeters

Provenance: By descent to the present Private Collection, British Columbia

Exhibited:

Literature:

Starting Bid: \$1,000 CDN

Estimate: \$2,000 ~ \$3,000 CDN

Preview at: Heffel Vancouver



**514**

DR. MAURICE HALL HAYCOCK

1900 - 1988 Canadian

**Candego Mine, Gaspé**

oil on canvas

signed and dated 1953 and on verso signed, titled and inscribed "1984"

24 x 30 inches 61 x 76.2 centimeters

Provenance: A gift from the Artist to the present Private Collection, Ontario, 1984

Exhibited:

Literature:

According to the present owner of this work, the artist painted this landscape in 1953 while he was with A.Y. Jackson. When gifting the painting in 1984, the artist signed and dated the verso in black ink.

Starting Bid: \$3,500 CDN

Estimate: \$3,500 ~ \$5,000 CDN

Preview at: Heffel – 13 Hazelton Ave Toronto



**515**

FRANK HANS (FRANZ) JOHNSTON

ARCA CSPWC G7 OSA 1888 - 1949 Canadian

**Abandoned to Beauty**

oil on board

signed and on verso titled on the artist's label and inscribed "WEC" and "184"

12 x 16 inches 30.5 x 40.6 centimeters

Provenance: Private Collection, Toronto

Exhibited:

Literature:

Starting Bid: \$5,000 CDN

Estimate: \$6,000 ~ \$8,000 CDN

Preview at: Heffel – 13 Hazelton Ave Toronto



**516**

FRANK HANS (FRANZ) JOHNSTON

ARCA CSPWC G7 OSA 1888 - 1949 Canadian

**Sunshine and Blue Shadows**

oil on board

signed and on verso titled on the artist's label

15 1/2 x 19 1/2 inches 39.4 x 49.5 centimeters

Provenance: Private Collection, Toronto

Exhibited:

Literature:

Starting Bid: \$5,000 CDN

Estimate: \$6,000 ~ \$8,000 CDN

Preview at: Heffel – 13 Hazelton Ave Toronto



**517**

JAMES FENWICK LANSDOWNE

ARCA OC 1937 - 2008 Canadian

**Goshawk Striking at Flicker**

gouache and watercolour on paper board

signed and dated 1953 and on verso titled  
18 x 16 inches 45.7 x 40.6 centimeters

Provenance: Private Collection, Vancouver

Exhibited:

Literature:

Please note: this work is unframed.

Starting Bid: \$1,300 CDN

Estimate: \$2,500 ~ \$3,500 CDN

Preview at: Heffel Vancouver



**518**

HENRI LEOPOLD MASSON

CGP CSGA CSPWC FCA OSA QMG RCA 1907 - 1996 Canadian

**St. Francis**

oil on board

signed and on verso inscribed "#13104"  
12 x 10 inches 30.5 x 25.4 centimeters

Provenance: The Isaacs Gallery Ltd., Toronto  
Private Collection, Ontario

Exhibited:

Literature:

Starting Bid: \$700 CDN

Estimate: \$1,000 ~ \$1,500 CDN

Preview at: Heffel - 13 Hazelton Ave Toronto



**519**

PAUL PEEL

OSA RCA 1860 - 1892 Canadian

**Pont-Aven, France**

oil on canvas on board

signed and dated 1884  
15 3/4 x 12 1/2 inches 40 x 31.8 centimeters

Provenance: Sold sale of Joyner Fine Art, November 28, 1989, lot 35  
Sold sale of Important Canadian Art, Sotheby's Canada in association with Ritchie's,  
May 27, 2003, lot 76  
Private Collection, Toronto

Exhibited:

Literature:

Starting Bid: \$6,000 CDN

Estimate: \$7,000 ~ \$9,000 CDN

Preview at: Heffel - 13 Hazelton Ave Toronto





**520**

ROBERT WAKEHAM PILOT

CGP OSA PRCA 1898 - 1967 Canadian

**Autum Maples, St-Sauveur**

oil on board

signed and on verso signed, titled and dated 1945

12 x 17 inches 30.5 x 43.2 centimeters

Provenance: Watson Art Galleries, Montreal  
Private Collection, Montreal

Exhibited:

Literature:

Starting Bid: \$3,750 CDN

Estimate: \$6,000 ~ \$8,000 CDN

Preview at: Heffel Montreal



**521**

ROBERT WAKEHAM PILOT

CGP OSA PRCA 1898 - 1967 Canadian

**Victoria Basin, Montreal**

oil on panel

signed and on verso signed and dated 1961

8 x 10 1/2 inches 20.3 x 26.7 centimeters

Provenance: Galerie Walter Klinkhoff, Montreal  
Private Collection, Montreal

Exhibited:

Literature:

Starting Bid: \$4,500 CDN

Estimate: \$6,000 ~ \$8,000 CDN

Preview at: Heffel Montreal



**522**

GEORGE AGNEW REID

OSA PRCA 1860 - 1947 Canadian

**The Pond**

oil on canvas

signed and on verso titled on a label

30 x 25 inches 76.2 x 63.5 centimeters

Provenance: Private Collection, USA

Exhibited:

Literature:

Starting Bid: \$5,000 CDN

Estimate: \$6,000 ~ \$8,000 CDN

Preview at: Heffel - 13 Hazelton Ave Toronto





**523**

RENÉ JEAN RICHARD  
OC RCA 1895 - 1982 Canadian

**Chemin de terre, Charlevoix**

oil on board

signed and on verso signed  
16 x 20 inches 40.6 x 50.8 centimeters

Provenance: Private Collection, Ontario  
Exhibited:  
Literature:

Starting Bid: \$2,000 CDN  
Estimate: \$2,500 ~ \$3,500 CDN  
Preview at: Heffel – 13 Hazelton Ave Toronto



**524**

SARAH MARGARET ARMOUR ROBERTSON  
BHG CGP 1891 - 1948 Canadian

**View of Murray Bay, QC, from Cap-à-l'Aigle**

oil on panel

signed and on verso signed, titled, dated 1970 and inscribed variously  
8 1/2 x 10 1/2 inches 21.6 x 26.7 centimeters

Provenance: Sold sale of Fine Canadian Art, Heffel Fine Art Auction House, November 27, 2010,  
lot 753  
Private Collection, Vancouver

Exhibited:  
Literature:

Starting Bid: \$4,000 CDN  
Estimate: \$5,000 ~ \$7,000 CDN  
Preview at: Heffel Vancouver



**525**

SARAH MARGARET ARMOUR ROBERTSON  
BHG CGP 1891 - 1948 Canadian

**Winter Landscape**

oil on board

signed and on verso inscribed "#6238 Sarah Robertson" / "\$350"  
7 x 9 inches 17.8 x 22.9 centimeters

Provenance: Continental Galleries, Montreal  
Private Collection, Ontario  
Exhibited:  
Literature:

Starting Bid: \$6,000 CDN  
Estimate: \$6,000 ~ \$9,000 CDN  
Preview at: Heffel – 13 Hazelton Ave Toronto



**526**

ARTHUR DOMINIQUE ROZAIRE

ARCA 1879 - 1922 Canadian

**In Laurentian Mountains**

oil on board

on verso initialed, titled and inscribed "8503"  
10 1/2 x 13 1/2 inches 26.7 x 34.3 centimeters

Provenance: Private Collection, Calgary

Exhibited:

Literature:

Starting Bid: \$1,500 CDN

Estimate: \$2,000 ~ \$3,000 CDN

Preview at: Heffel Calgary



**527**

MARC-AURÈLE DE FOY SUZOR-COTÉ

CAC RCA 1869 - 1937 Canadian

**Les deux chemins, Ste-Hélène, Arthabaska**

oil on board

on verso signed, titled, dated 1896 and inscribed "This painting was painted by my brother Suzor-Coté in the year 1896. Côté."

8 x 14 inches 20.3 x 35.6 centimeters

Provenance: Galerie d'art Michel-Bigué, Saint-Sauveur  
Canadian Fine Arts, Toronto  
Private Collection, Montreal

Exhibited:

Literature:

Starting Bid: \$5,500 CDN

Estimate: \$6,000 ~ \$8,000 CDN

Preview at: Heffel Montreal



**528**

HORATIO WALKER

AWCS CAC NAD RCA RI RSC SAA 1858 - 1938 Canadian

**Evening, Ile d'Orleans, Quebec**

oil on linen

signed and on verso titled on the gallery label and inscribed "38" and "3582"

28 x 38 inches 71.1 x 96.5 centimeters

Provenance: Galerie Walter Klinkhoff, Montreal  
Sold sale of Fine Canadian Art Highlights, Heffel Fine Art Auction House, November 28, 2015, lot 329  
Private Collection, Quebec

Exhibited:

Literature:

Starting Bid: \$5,000 CDN

Estimate: \$6,000 ~ \$8,000 CDN

Preview at: Heffel Montreal



**601**

**SYBIL ANDREWS**

CPE 1898 - 1992 Canadian

## **Michaelmas**

linocut in 4 colours

signed, titled and editioned 28/60

13 1/2 x 10 7/8 inches 34.3 x 27.6 centimeters

Provenance: Uno Langmann Gallery, Vancouver, March 1978  
Petley Jones Gallery, Vancouver  
Private Collection, Vancouver

Exhibited: Victoria Art Centre, March 1951

Literature: Peter White, *Sybil Andrews*, Glenbow Museum, 1982, reproduced pages 41 and 58, catalogue #33  
Stephen Coppel, *Linocuts of the Machine Age*, 1995, reproduced page 115, catalogue #SA 33  
Hana Leaper, *Sybil Andrews Linocuts: A Complete Catalogue*, 2015, reproduced page 80, and the c. 1935 line drawing *Sketch for Michaelmas* reproduced page 20, Fig. 8

The 1930s were a time of overwhelming social and economic change between the wars in both America and England – the Depression, mechanization, strikes and issues of unemployment were part of this shock wave. For the Grosvenor School printmakers such as Sybil Andrews, social awareness was on the rise, and workers were portrayed as vigorous and productive. In the mid-1930s, after previously emphasizing the integration of workers with machinery in her images, Andrews was producing images of farm labourers in the countryside, using their hands and simple tools. In her figures, Andrews deployed a streamlined stylization that eliminated facial features, symbolizing an egalitarian universality. The title *Michaelmas* refers to the ending and beginning of the husbandman's year in medieval England, which fell on September 29, associated with the end of harvest, appropriate to this image of bringing in the hay. Bright colour, the strong forms of the horses and carts, and the emphasis on texture in the furrows of the field make this an exceptionally vibrant linocut.

This is a fine impression on buff oriental laid tissue.

Please note: this work is unframed.

Starting Bid: \$8,000 CDN

Estimate: \$8,000 ~ \$12,000 CDN

Preview at: Heffel Vancouver



**602**

**SYBIL ANDREWS**

CPE 1898 - 1992 Canadian

### **Trackway**

linocut in 4 colours

signed, titled Piste and editioned 18/60 and on verso titled Trackway on the exhibition label  
14 x 9 1/4 inches 35.6 x 23.5 centimeters

Provenance: Kenneth G. Heffel Fine Art Inc., Vancouver  
Private Collection, Victoria  
Sold sale of Fine Canadian Art, Heffel Fine Art Auction House, June 17, 2009, lot 111  
Private Collection, Vancouver

Exhibited: Glenbow Museum, Calgary, Sybil Andrews, 1982, catalogue #56, exhibition label on verso

Literature: Peter White, Sybil Andrews, Glenbow Museum, 1982, reproduced page 63  
Stephen Coppel, Linocuts of the Machine Age, 1995, reproduced page 122, catalogue #SA 61  
Hana Leaper, Sybil Andrews Linocuts: A Complete Catalogue, 2015, reproduced page 115

Editions of this print were titled either Trackway or Piste. This print is the same one that was exhibited at the Glenbow Museum exhibition of Sybil Andrews's work in 1982.

This is a fine impression on thin oriental tissue.

Please note: this work is unframed.

Starting Bid: \$10,000 CDN

Estimate: \$10,000 ~ \$15,000 CDN

Preview at: Heffel Vancouver



**603**

**SYBIL ANDREWS**

CPE 1898 - 1992 Canadian

### **Mowers**

linocut in 4 colours

signed, titled and editioned 51/60 and on verso signed, titled, editioned on the gallery label and dated 1937

11 3/4 x 13 3/4 inches 29.8 x 34.9 centimeters

Provenance: DeVoogt Gallery, Vancouver, 1979  
Loch Gallery, Winnipeg  
Private Collection, Ontario

Exhibited: Glenbow Museum, Calgary, Sybil Andrews, 1982, same image, catalogue #39  
Osborne Samuel, London, The Cutting Edge of Modernity: An Exhibition of Grosvenor School Linocuts, April 11 - May 11, 2013, same image

Literature: Peter White, Sybil Andrews: Colour Linocuts, Glenbow Museum, 1982, reproduced page 59, also reproduced full page colour page 39  
Stephen Coppel, Linocuts of the Machine Age, 1995, reproduced page 117, catalogue #SA 39  
The Cutting Edge of Modernity: An Exhibition of Grosvenor School Linocuts, Osborne Samuel, 2013, reproduced page 35  
Hana Leaper, Sybil Andrews Linocuts: A Complete Catalogue, 2015, reproduced page 86

Starting Bid: \$6,500 CDN

Estimate: \$8,000 ~ \$12,000 CDN

Preview at: Heffel - 13 Hazelton Ave Toronto



**604**

KENOJUAK ASHEVAK  
CC RCA 1927 - 2013 Canadian

### **Owl in Blue**

stonecut and stencil on paper

signed and in syllabics, titled, editioned 9/50, dated 1991, inscribed "Dorset", embossed with the Cape Dorset blindstamp and stamped  
24 x 33 inches 61 x 83.8 centimeters

Provenance: Northern Images, Whitehorse  
Private Collection, Vancouver

Exhibited:  
Literature:

Starting Bid: \$500 CDN

Estimate: \$1,000 ~ \$1,500 CDN

Preview at: Heffel Vancouver



**605**

KENOJUAK ASHEVAK  
CC RCA 1927 - 2013 Canadian

### **Audacious Owl**

stonecut and stencil on paper

signed and in syllabics, titled, editioned 15/100, dated 1993, inscribed "Dorset" and stamped with the artist's signature in syllabics  
19 x 24 1/2 inches 48.3 x 62.2 centimeters

Provenance: Northern Images, Whitehorse  
Private Collection, Vancouver

Exhibited:  
Literature:

Starting Bid: \$500 CDN

Estimate: \$1,000 ~ \$1,500 CDN

Preview at: Heffel Vancouver



**606**

KENOJUAK ASHEVAK  
CC RCA 1927 - 2013 Canadian

### **Riding on Mother Owl**

stonecut and stencil on paper

signed, titled, editioned 43/50, dated 1996, inscribed "Dorset" and stamped with the artist's signature in syllabics  
17 x 23 inches 43.2 x 58.4 centimeters

Provenance: Northern Images, Whitehorse  
Private Collection, Vancouver

Exhibited:  
Literature:

Starting Bid: \$500 CDN

Estimate: \$1,000 ~ \$1,500 CDN

Preview at: Heffel Vancouver



**607**

HARRY BERTOIA  
1915 - 1978 American

**Somambient**

beryllium copper sculpture

stamped "Design: Harry Bertoia, circa 1970 Knoll 1996 Edition: 100 Cliff McCormick"  
16 x 3 x 3 inches 40.6 x 7.6 x 7.6 centimeters

Provenance: Private Collection, Calgary  
Exhibited:  
Literature:

This lot is accompanied by a custom granite base.

Starting Bid: \$3,500 CDN

Estimate: \$4,000 ~ \$6,000 CDN

Preview at: Heffel Calgary



**608**

DAVID LLOYD BLACKWOOD  
CPE CSGA CSPWC OSA RCA 1941 - Canadian

**Uncle Eli Glover Moving**

etching and aquatint on paper

signed, titled, editioned 1/50 and dated 1982 and on verso dated October 1982 on the gallery label  
14 x 33 3/4 inches 35.6 x 85.7 centimeters

Provenance: Gallery Pascal, Toronto  
Private Collection, Ontario

Exhibited:  
Literature:

Starting Bid: \$3,500 CDN

Estimate: \$4,000 ~ \$6,000 CDN

Preview at: Heffel - 13 Hazelton Ave Toronto



**609**

DAVID LLOYD BLACKWOOD  
CPE CSGA CSPWC OSA RCA 1941 - Canadian

**Outward Bound for the Labrador**

etching and aquatint on paper

signed, titled, editioned H/C, dated 1985 and inscribed "Final Working Proof"  
15 x 35 3/4 inches 38.1 x 90.8 centimeters

Provenance: Private Collection, Ontario  
Exhibited:

Literature:

Starting Bid: \$3,500 CDN

Estimate: \$4,000 ~ \$6,000 CDN

Preview at: Heffel - 13 Hazelton Ave Toronto



**610**

DAVID LLOYD BLACKWOOD  
CPE CSGA CSPWC OSA RCA 1941 - Canadian

**Lewis Lacey's Lantern**

etching on paper

signed, titled, editioned 94/150 and dated 1998  
6 x 6 1/2 inches 15.2 x 16.5 centimeters

Provenance: Private Collection, Ontario  
Exhibited:  
Literature:

Starting Bid: \$500 CDN  
Estimate: \$800 ~ \$1,000 CDN  
Preview at: Heffel – 13 Hazelton Ave Toronto



**611**

DAVID LLOYD BLACKWOOD  
CPE CSGA CSPWC OSA RCA 1941 - Canadian

**For Ishmael Tiller: The Ledgy Rocks**

etching and aquatint on paper

signed, titled, editioned 39/75 and dated 1990  
35 1/2 x 23 1/2 inches 90.2 x 59.7 centimeters

Provenance: By descent to the present Private Collection, USA  
Exhibited:  
Literature:

Starting Bid: \$3,000 CDN  
Estimate: \$5,000 ~ \$7,000 CDN  
Preview at: Heffel Vancouver



**612**

EDWARD BURTYNSKY  
OC RCA 1955 - Canadian

**Glacial Runoff #1, Skeidararsandur, Iceland**

digital chromogenic print

on verso signed, titled, editioned 8/9, dated 2012 and monogrammed on the artist's label  
39 x 52 inches 99.1 x 132.1 centimeters

Provenance: Private Collection, Toronto  
Exhibited:  
Literature:

Starting Bid: \$10,000 CDN  
Estimate: \$12,000 ~ \$16,000 CDN  
Preview at: Heffel – 13 Hazelton Ave Toronto





**613**

EDWARD BURTYNSKY

OC RCA 1955 - Canadian

**Old Factories #9, Fushun Aluminum Smelter, Fushun City, Liaoning Province, China**

digital chromogenic print

on verso signed, titled, editioned 2/9 and dated 2005 on the artist's label

39 x 49 inches 99.1 x 124.5 centimeters

Provenance: Nicholas Metivier Gallery, Toronto  
Private Collection

Exhibited:

Literature: Lori Pauli et al., *Manufactured Landscapes: The Photographs of Edward Burtynsky*, 2003, page 48

Edward Burtynsky's photographs from 2002 to 2005 of industrial China are both art and documentary, which makes them fascinating on many levels. What we see in *Old Factories # 9* is a relic of old industrial China, focused on the heavy metal production of the late 1970s and 1980s that fell out of favour in the wake of China's move towards the new processes of industrial manufacturing.

Burtynsky chose to frame this photo devoid of people. As a photographer he is always careful of what he includes and excludes from any given image, and this old factory could be likened to a ruin.

Burtynsky stated, "I started thinking about ruins and the kinds of emotions they provoke. Throughout art history the ruin has been a subject of contemplation, of something melancholy and monumental. I think a lot of what I photograph are the ruins of our society, the ruins in the landscape, the things that are left behind."

What impresses in this image is the depth perspective and the vastness of the factory itself. The viewer has a telescopic vantage point, starting with a wide angle that narrows toward a tiny opening of light at the end of the factory tunnel. It is symbolic, as for China the wave of mass production and economic growth that followed had enormous social, cultural and political implications. Burtynsky's photographs of China are significant on numerous levels, and are appreciated by art historians, anthropologists, sociologists and the general public alike.

Starting Bid: \$14,000 CDN

Estimate: \$15,000 ~ \$20,000 CDN

Preview at: Heffel - 13 Hazelton Ave Toronto



**614**

ALEXANDER COLVILLE

PC CC 1920 - 2013 Canadian

**Woman, Dog and Canoe**

colour serigraph on paper

signed, editioned 44/70 and dated 1982

16 1/2 x 27 inches 41.9 x 68.6 centimeters

Provenance: Private Collection, Ontario

Exhibited:

Literature:

Starting Bid: \$8,000 CDN

Estimate: \$10,000 ~ \$15,000 CDN

Preview at: Heffel - 13 Hazelton Ave Toronto



**615**

ALEXANDER COLVILLE

PC CC 1920 - 2013 Canadian

### **New Moon**

colour serigraph on paper

signed, editioned 36/70 and dated 1980

14 x 17 1/2 inches 35.6 x 44.5 centimeters

Provenance: Private Collection, Ontario

Exhibited:

Literature:

Starting Bid: \$4,000 CDN

Estimate: \$5,000 ~ \$7,000 CDN

Preview at: Heffel – 13 Hazelton Ave Toronto



**616**

ALEXANDER COLVILLE

PC CC 1920 - 2013 Canadian

### **Willow**

colour serigraph on paper

signed, editioned 56/70 and dated 2002

27 1/2 x 17 inches 69.8 x 43.2 centimeters

Provenance: Private Collection, Calgary

Exhibited:

Literature: Tom Smart, Alex Colville: Return, Art Gallery of Nova Scotia, 2003, reproduced page 109

Starting Bid: \$6,000 CDN

Estimate: \$7,000 ~ \$9,000 CDN

Preview at: Heffel Calgary



**617**

ALEXANDER COLVILLE

PC CC 1920 - 2013 Canadian

### **Crow with Silver Spoon**

colour serigraph on paper

signed, editioned 46/70 and dated 1972

18 x 18 inches 45.7 x 45.7 centimeters

Provenance: Private Collection, Fredericton

Exhibited:

Literature: Helen J. Dow, The Art of Alex Colville, 1972, reproduced page 200 and listed page 223  
David Burnett, Colville, Art Gallery of Ontario, 1983, reproduced page 187 and listed page 252

This work is framed with plexiglass.

Starting Bid: \$5,000 CDN

Estimate: \$5,000 ~ \$7,000 CDN

Preview at: Heffel Calgary



**618**

IVAN KENNETH EYRE

RCA 1935 - Canadian

**Sun Gown**

bronze sculpture

signed

15 x 11 x 10 3/4 inches 38.1 x 27.9 x 27.3 centimeters

Provenance: Private Collection, Toronto

Exhibited:

Literature:

This sculpture was produced in an edition of 10.

Starting Bid: \$6,000 CDN

Estimate: \$8,000 ~ \$10,000 CDN

Preview at: Heffel – 13 Hazelton Ave Toronto



**619**

JOSEPH HECTOR YVON (JOE) FAFARD

OC RCA 1942 - 2019 Canadian

**Bull**

unpainted earthenware sculpture

10 x 11 x 20 inches 25.4 x 27.9 x 50.8 centimeters

Provenance: Susan Whitney Gallery, Regina  
Masters Gallery Ltd., Calgary  
Private Collection, Victoria

Exhibited:

Literature:

This sculpture is an original work. An earthenware sculpture differs from a ceramic sculpture in that it has been fired at lower temperature and is thus permeable to water.

Please note: a portion of the right horn is missing.

Starting Bid: \$2,000 CDN

Estimate: \$4,000 ~ \$6,000 CDN

Preview at: Heffel Vancouver



**620**

AGATHA (GATHIE) FALK

BCSA OC 1928 - Canadian

**Ceramic Gift Box**

ceramic sculpture

11 x 10 1/4 x 10 1/4 inches 27.9 x 26 x 26 centimeters

Provenance: Sold sale of Canadian & Contemporary Art, Maynards Fine Art & Antiques, May 5, 2011, lot 74  
Private Collection, Toronto

Exhibited:

Literature:

Starting Bid: \$2,000 CDN

Estimate: \$2,500 ~ \$3,500 CDN

Preview at: Heffel – 13 Hazelton Ave Toronto



**621**

JEFF KOONS

1955 - American

**Balloon Dog (Yellow)**

porcelain sculpture

on verso signed, titled, editioned 0594/2300 and dated 2015  
10 1/2 x 10 1/2 x 5 inches 26.7 x 26.7 x 12.7 centimeters

Provenance: Private Collection, New York

Exhibited:

Literature:

Porcelain multiple painted in chrome, contained in the original Styrofoam-lined presentation box with silver printed signature and original plastic stand.

Stamp-editioned 0594/2300 in gold ink on the underside, and in black ink on the accompanying Bernardaud card.

This work was manufactured by Bernardaud, Limoges, and published by the Museum of Contemporary Art, Los Angeles.

Starting Bid: \$8,000 CDN

Estimate: \$8,000 ~ \$12,000 CDN

Preview at: Heffel – 13 Hazelton Ave Toronto



**622**

**WILLIAM HODD (BILL) MCELCHERAN**

RCA 1927 - 1999 Canadian

**Businessman with Briefcase**

bronze sculpture

signed, editioned 1/9 and dated 1996

9 1/2 x 3 3/4 x 5 inches 24.1 x 9.5 x 12.7 centimeters

Provenance: Kinsman Robinson Galleries, Toronto  
Private Collection, Ontario

Exhibited:

Literature:

Starting Bid: \$3,000 CDN

Estimate: \$4,000 ~ \$6,000 CDN

Preview at: Heffel - 13 Hazelton Ave Toronto



**623**

**CHRISTOPHER PRATT**

ARCA CSGA OC 1935 - Canadian

**Night Trestle**

colour serigraph on paper

signed, titled, editioned 29/48 and dated 1983

19 1/2 x 19 1/2 inches 49.5 x 49.5 centimeters

Provenance: Private Collection, Calgary

Exhibited:

Literature: Jay Scott and Christopher Pratt, *The Prints of Christopher Pratt, 1958 - 1991: Catalogue Raisonné*, Mira Godard Gallery, 1991, reproduced page 80

Christopher Pratt wrote, "On Waterford Bridge Road we lived just across the river from the railway tracks. In the late '40s and early '50s steam locomotives still hauled the trains in Newfoundland, and we saw or heard every train that left or arrived in St. John's. When I got to Sackville, trains were omnipresent; and my first recollection of being there is of hearing locomotives in the night, wailing on the Tantramar."

Starting Bid: \$5,000 CDN

Estimate: \$5,000 ~ \$7,000 CDN

Preview at: Heffel Calgary



**624**

CHRISTOPHER PRATT

ARCA CSGA OC 1935 - Canadian

**Big Following Sea**

lithograph on paper

signed, titled, editioned Artist's Proof and dated 1996  
10 3/4 x 16 1/2 inches 27.3 x 41.9 centimeters

Provenance: Private Collection, Fredericton  
Exhibited:  
Literature:

Starting Bid: \$1,500 CDN  
Estimate: \$3,000 ~ \$4,000 CDN  
Preview at: Heffel Calgary



**625**

PAUTA SAILA

RCA 1916 - 2009 Canadian

**Dancing Bear**

soapstone sculpture

on verso signed "Pauta" and in syllabics  
17 1/2 x 13 x 6 inches 44.5 x 33 x 15.2 centimeters

Provenance: North of Sixty Gallery, St. Andrews, New Brunswick  
Private Collection, Fredericton  
Exhibited:  
Literature:

Starting Bid: \$14,000 CDN  
Estimate: \$15,000 ~ \$20,000 CDN  
Preview at: Heffel Calgary



**626**

GORDON APPELBE SMITH

BCSFA CGP CPE OC RCA 1919 - Canadian

**Morning Howe Sound**

colour serigraph on paper

signed, titled and editioned A/P  
16 x 21 1/2 inches 40.6 x 54.6 centimeters

Provenance: Private Collection, Calgary  
Exhibited:  
Literature:

Starting Bid: \$500 CDN  
Estimate: \$1,000 ~ \$1,500 CDN  
Preview at: Heffel Calgary



**627**

TAKAO TANABE

OC 1926 - Canadian

### **Raza, Early Evening**

woodcut printed in colours

signed, titled, editioned A/P and dated 1994

21 x 33 1/2 inches 53.3 x 85.1 centimeters

Provenance: Private Collection, Calgary

Exhibited:

Literature:

This print is of an edition of 15.

Starting Bid: \$1,300 CDN

Estimate: \$2,500 ~ \$3,000 CDN

Preview at: Heffel Calgary



**628**

LAWRENCE PAUL YUXWELUPTUN

1957 - Canadian

### **Clear Cut to the Last Tree**

screenprint on paper

signed, titled and editioned 87/98

27 x 18 inches 68.6 x 45.7 centimeters

Provenance: Private Collection, Vancouver

Exhibited:

Literature:

Please note: this work is unframed.

Starting Bid: \$1,500 CDN

Estimate: \$2,500 ~ \$3,500 CDN

Preview at: Heffel Vancouver



**701**

ROBERT BATEMAN

OC 1930 - Canadian

### **Zebra**

oil on board

signed and dated 2000

12 x 24 inches 30.5 x 61 centimeters

Provenance: Peninsula Gallery, Sidney  
Private Collection, Vancouver

Exhibited:

Literature:

Starting Bid: \$9,000 CDN

Estimate: \$10,000 ~ \$15,000 CDN

Preview at: Heffel Vancouver





**702**

**ROBERT BATEMAN**

OC 1930 - Canadian

### **Deer Mouse and Wild Grapes**

acrylic on board

signed and dated 2004 and on verso titled Deer Mouse and inscribed "Racoon" (crossed out)  
12 x 10 inches 30.5 x 25.4 centimeters

Provenance: Private Collection, Ontario

Exhibited:

Literature: Robert Bateman, *Bateman: New Works*, 2014, page 22, reproduced page 31, listed page 171

This gentle autumnal work features not only Robert Bateman's well-known and sensitive observations of the natural world, but also an interesting and deft use of the acrylic medium. The stippled background and subtle application of the paint creates a softness and delicacy in the surface, reminiscent of pastel. This adds wonderfully to the sense of fragility in the leaves and branches, as well as to the delicacy of the mouse itself. Its poised alertness and precarious search for food as winter approaches suggests an undercurrent of anxiety that is best explained by the artist himself. In the Artist's Statement from the 2014 publication *New Work*, in which this painting is reproduced, he says: "Nature is beautiful, and artists who paint and photograph nature celebrate its gorgeous wonders. Nature, however, has its dark side: suffering and dying are part of reality for all living things." This duality speaks very clearly to the understated complexity in Bateman's work that has made him one of the most beloved naturalists of the 20th century.

Starting Bid: \$5,000 CDN

Estimate: \$8,000 ~ \$10,000 CDN

Preview at: Heffel – 13 Hazelton Ave Toronto



**703**

**ROBERT BATEMAN**

OC 1930 - Canadian

### **Stream Bank - June**

acrylic on board

signed and dated 1968

18 x 29 inches 45.7 x 73.7 centimeters

**Provenance:** Collection of Madison Press Books, Toronto  
Private Collection, Toronto

**Exhibited:** Lynnwood Art Gallery, Simcoe, Ontario, 1978  
National Museum of Natural Sciences, Ottawa, Images of the Wild, 1981-82  
Portraits of Nature, Smithsonian National Museum of Natural History, Washington DC, 1987  
The Robert Bateman Centre Victoria, British Columbia, extended loan

**Literature:** Ramsay Derry, *The Art of Robert Bateman*, 1981, page 8, reproduced page 9  
Ramsay Derry, *The World of Robert Bateman*, 1985, page 21  
Video: <https://www.youtube.com/watch?v=BOjFGSGkW04>

Stylistically, this work marks an important moment in Bateman's work. In 1967 after painting in a cubist and abstract manner, Bateman expressed that he was "into realism with full force." Author Ramsay Derry notes that the artist acknowledged his stylistic development and integrative approach, stating that "behind the realism there are dominant abstract shapes and rhythmic patterns developed out of cubist techniques." *Stream Bank, June*, completed in 1968, demonstrates the artist's prowess and integration of his artistic education.

Robert Bateman explains that *Spring Bank, June* was inspired by the following passage by Charles Darwin;

"It is interesting to contemplate an entangled bank, clothed with many plants of many kinds, with birds singing on the bushes, with various insects flitting about, and with worms crawling through the damp earth, and to reflect that these elaborately constructed forms, so different from each other, and dependent on each other in so complex a manner, have all been produced by laws acting around us." It is not surprising that Darwin's words were a fruitful creative impetus for Bateman, whose art practice has been dedicated to depicting and celebrating nature and the complex beauty of ecological systems. Bateman discusses further thoughts and inspiration for *Streambank, June* [in this video.](https://www.youtube.com/watch?v=BOjFGSGkW04) Bateman's capacity for detail and exactitude is overt in this work. While it is easy to get lost in the meticulous details of the scene, the subject itself is quite contemplative. Bateman notes, "I deliberately picked an ordinary, common place, complicated and confused chunk of nature." He illustrated the entangled mesh, and inextricable connectedness of ecology both literally and metaphorically. This painting acts as a microscope, illustrating the vast complexity within the seemingly simple and minute.

While the inspiration for this work stems from the 19th Century, the painting also has contemporary resonance. *Spring Bank, June* prompts introspection on the inter-connectedness of ecology and the inextricable complex relationship of civilization and nature. It is a quiet, yet forceful meditation on cause and effect.

**Starting Bid:** \$22,500 CDN

**Estimate:** \$25,000 ~ \$35,000 CDN

**Preview at:** Heffel Vancouver



**704**

**MIKE BAYNE**

1977 - Canadian

**King Street Alley**

oil on board

4 x 6 inches 10.2 x 15.2 centimeters

Provenance: Katharine Mulherin Gallery, Toronto  
Private Collection, Toronto

Exhibited:

Literature: Robert Enright, "Detaillesque: Mike Bayne," Border Crossings, June 2009, page 18

For many years, Mike Bayne has transformed photographs of still suburban scenes – houses, old businesses, alley ways and more – into small-scale oil paintings. Working entirely from his own photographs, Bayne translates the banal into remarkable paintings, which value the often overlooked details of an ordinary, everyday setting. "We're constantly surrounded by things that we interact with but don't take the time to absorb. If you stop for a moment – if you're forced to stop and examine something – it can be pretty surprising. That moment can be transformational."

Using a photograph to capture his subject at a moment in time, he continues a tradition used by painters for centuries. Bayne describes his paintings as a social construction of his own experience – his selected image is transformed into another extraordinary art form.

Starting Bid: \$7,000 CDN

Estimate: \$8,000 ~ \$10,000 CDN

Preview at: Heffel – 13 Hazelton Ave Toronto



**705**

**DAVID LLOYD BLACKWOOD**

CPE CSGA CSPWC OSA RCA 1941 - Canadian

**Grenfell's Service on Deck**

graphite on paper

signed, dated 1977 and stamped with the Rives blind stamp and on verso titled on a label

15 1/2 x 20 inches 39.4 x 50.8 centimeters

Provenance: Private Collection, Ontario

Exhibited:

Literature:

Starting Bid: \$4,000 CDN

Estimate: \$5,000 ~ \$7,000 CDN

Preview at: Heffel – 13 Hazelton Ave Toronto



**706**

SERGE BRUNONI

1938 - Canadian

**Montréal, sur le trottoir de la ville**

oil on canvas

signed and on verso signed and titled

24 x 30 inches 61 x 76.2 centimeters

Provenance: Kastel Gallery, Montreal  
Private Collection, Vancouver

Exhibited:

Literature:

Starting Bid: \$1,000 CDN

Estimate: \$2,000 ~ \$3,000 CDN

Preview at: Heffel Vancouver



**707**

YEHOUDA CHAKI

1938 - Canadian

**Golan Series 9720**

oil on canvas

signed and on verso signed and titled

48 x 60 inches 121.9 x 152.4 centimeters

Provenance: Private Collection, Calgary

Exhibited:

Literature:

Starting Bid: \$10,000 CDN

Estimate: \$10,000 ~ \$15,000 CDN

Preview at: Heffel Vancouver



**708**

BRUNO COTE

1940 - 2010 Canadian

**Ru en été**

oil on board

signed and on verso signed and titled

24 x 30 inches 61 x 76.2 centimeters

Provenance: Private Collection, Ontario

Exhibited:

Literature:

Starting Bid: \$2,000 CDN

Estimate: \$3,000 ~ \$4,000 CDN

Preview at: Heffel - 13 Hazelton Ave Toronto



**709**

DONALD M. FLATHER

FCA 1903 - 1990 Canadian

### **Mount Braathen**

oil on board

signed and on verso titled and dated 1981, 1982, 1984, 1986 and 1987

35 3/4 x 48 1/2 inches 90.8 x 123.2 centimeters

Provenance: Private Collection, Vancouver

Exhibited:

Literature:

Inscribed on verso: "The Spirit at the Head" / "Inugsuin Fiord" / "South of the Clyde" / "East of Baffin Island" / "Facing Baffin" / "Going to Pond Inlet"

Starting Bid: \$7,000 CDN

Estimate: \$8,000 ~ \$12,000 CDN

Preview at: Heffel Vancouver



**710**

ROBERT GENN

FCA 1936 - 2014 Canadian

### **Stump Lake Near Alkali Lake, BC**

oil on canvas

signed and on verso signed and titled

20 x 24 inches 50.8 x 61 centimeters

Provenance: Private Collection, British Columbia

Exhibited:

Literature:

Please note: this work is unframed.

Starting Bid: \$1,300 CDN

Estimate: \$2,500 ~ \$3,500 CDN

Preview at: Heffel Vancouver



**711**

ROBERT GENN

FCA 1936 - 2014 Canadian

### **Late Forest Snow**

oil on canvas board

signed and on verso signed, titled and dated 1971

18 x 24 inches 45.7 x 61 centimeters

Provenance: Private Collection, British Columbia

Exhibited:

Literature:

Please note: this work is unframed.

Starting Bid: \$1,000 CDN

Estimate: \$2,000 ~ \$3,000 CDN

Preview at: Heffel Vancouver



**712**

ROLAND GISSING

ASA 1895 - 1967 Canadian

### Evening Shadows

oil on canvas

signed and on verso titled and dated 1955

18 x 24 inches 45.7 x 61 centimeters

Provenance: Canadian Art Galleries, Calgary  
By descent to the present Private Collection, British Columbia

Exhibited:

Literature:

Starting Bid: \$2,500 CDN

Estimate: \$3,000 ~ \$4,000 CDN

Preview at: Heffel Vancouver



**713**

TED HARRISON

OC SCA 1926 - 2015 Canadian

### L'Indienne de Gauguin

acrylic on canvas board

signed and dated 1973 and on verso signed, titled and dated

22 x 28 inches 55.9 x 71.1 centimeters

Provenance: Acquired directly from the Artist by the present Private Collection, Vancouver

Exhibited: Eatons Toronto, September 1973 or 1974

Literature:

The newspaper clipping shown here shows Ted Harrison shaking hands with Prime Minister Jean Chretien (then Minister of Indian Affairs and Northern Development), at the Eaton's Toronto Exhibition of Harrison's works. In the background, L'Indienne de Gauguin is displayed. This clipping is included with the work.

Starting Bid: \$6,000 CDN

Estimate: \$7,000 ~ \$9,000 CDN

Preview at: Heffel Vancouver



**714**

TED HARRISON

OC SCA 1926 - 2015 Canadian

### Starting Off

acrylic on board

signed and dated 1972 and on verso signed, titled, dated, inscribed "Dawson-Yukon" on a label and stamped with the Gallery of the Golden Key stamp

12 x 14 inches 30.5 x 35.6 centimeters

Provenance: Gallery of the Golden Key, Vancouver  
Private Collection, Vancouver

Exhibited:

Literature:

Starting Bid: \$2,000 CDN

Estimate: \$3,000 ~ \$5,000 CDN

Preview at: Heffel Vancouver





**715**

TED HARRISON  
OC SCA 1926 - 2015 Canadian

### **The Storefront**

silkscreen on paper

signed, titled, editioned 16/100 and dated 1979  
13 x 17 inches 33 x 43.2 centimeters

Provenance: Acquired directly from the Artist by the present Private Collection, Vancouver  
Exhibited:  
Literature:

Starting Bid: \$300 CDN  
Estimate: \$600 ~ \$800 CDN  
Preview at: Heffel Vancouver



**716**

TED HARRISON  
OC SCA 1926 - 2015 Canadian

### **Our Village**

silkscreen on paper

signed, titled, editioned 11/100 and dated 1979  
13 x 17 inches 33 x 43.2 centimeters

Provenance: Acquired directly from the Artist by the present Private Collection, Vancouver  
Exhibited:  
Literature:

Starting Bid: \$300 CDN  
Estimate: \$600 ~ \$800 CDN  
Preview at: Heffel Vancouver



**717**

TED HARRISON  
OC SCA 1926 - 2015 Canadian

### **Paddle Wheeler**

silkscreen on paper

signed, titled, editioned 68/100 and dated 1979  
13 x 17 inches 33 x 43.2 centimeters

Provenance: Acquired directly from the Artist by the present Private Collection, Vancouver  
Exhibited:  
Literature:

Starting Bid: \$300 CDN  
Estimate: \$600 ~ \$800 CDN  
Preview at: Heffel Vancouver



**718**

TED HARRISON  
OC SCA 1926 - 2015 Canadian

### **Garbage Lovers**

acrylic on canvas

signed and on verso signed, titled and dated 1991  
14 x 18 inches 35.6 x 45.7 centimeters

Provenance: Private Collection, Fredericton  
Exhibited:  
Literature:

Starting Bid: \$6,000 CDN  
Estimate: \$6,000 ~ \$8,000 CDN  
Preview at: Heffel Calgary



**719**

FRANCESCO (FRANK) IACURTO  
RCA SAPQ 1908 - 2001 Canadian

### **Sous-bois**

oil on canvas

signed and dated 1960  
18 1/4 x 22 1/4 inches 46.4 x 56.5 centimeters

Provenance: Private Collection, Ontario  
Exhibited:  
Literature:

Starting Bid: \$1,000 CDN  
Estimate: \$1,500 ~ \$2,000 CDN  
Preview at: Heffel - 13 Hazelton Ave Toronto



**720**

JOHN KASYN  
CSPWC OSA 1926 - 2008 Canadian

### **After the Snow (Parkdale)**

oil on board

signed and on verso signed, titled and inscribed "03682"  
16 x 12 inches 40.6 x 30.5 centimeters

Provenance: Sold sale of Fine Art, Levis Fine Art, October 5, 2003, lot 56  
Private Collection, Vancouver  
Exhibited:  
Literature:

Starting Bid: \$4,000 CDN  
Estimate: \$5,000 ~ \$7,000 CDN  
Preview at: Heffel Vancouver



**721**

BARBARA ANN KIPLING  
ARCA BCSFA 1934 - Canadian

**Untitled**

watercolour on paper

on verso dated July 8, 2002 and inscribed "DUG 14708"/"132"/"3"  
11 1/2 x 30 inches 29.2 x 76.2 centimeters

Provenance: Douglas Udell Gallery  
Private Collection, Vancouver

Exhibited:

Literature:

Starting Bid: \$400 CDN

Estimate: \$800 ~ \$1,200 CDN

Preview at: Heffel Vancouver



**722**

DOROTHY KNOWLES  
OC 1927 - Canadian

**Mountain Lake WC-272-84**

watercolour on paper

signed and dated 1984 and on verso titled on the gallery label  
7 1/4 x 11 inches 18.4 x 27.9 centimeters

Provenance: Douglas Udell Gallery, Edmonton and Vancouver  
Private Collection, Vancouver

Exhibited:

Literature:

Starting Bid: \$400 CDN

Estimate: \$800 ~ \$1,200 CDN

Preview at: Heffel Vancouver



**723**

MAUD LEWIS  
1903 - 1970 Canadian

**Two Deer in Winter**

oil on board

signed  
12 x 14 inches 30.5 x 35.6 centimeters

Provenance: Private Collection, Florida

Exhibited:

Literature:

Starting Bid: \$8,500 CDN

Estimate: \$9,000 ~ \$12,000 CDN

Preview at: Heffel - 13 Hazelton Ave Toronto



**724**

JOHN GEOFFREY CARUTHERS LITTLE

ARCA 1928 - Canadian

**Old Halifax Ferry Wharf**

oil on canvas board

signed and on verso signed, titled and dated 1971

8 x 10 inches 20.3 x 25.4 centimeters

Provenance: A gift from the Artist  
By descent to the present Private Collection, Calgary

Exhibited:

Literature:

Starting Bid: \$4,000 CDN

Estimate: \$5,000 ~ \$7,000 CDN

Preview at: Heffel Calgary



**725**

JOHN GEOFFREY CARUTHERS LITTLE

ARCA 1928 - Canadian

**La Patinoire, Château Frontenac, Québec**

oil on canvas

signed and on verso signed, titled Le [sic] Patinoire, Château Frontenac, Québec and dated 1969

12 x 16 inches 30.5 x 40.6 centimeters

Provenance: The Art Emporium, Vancouver  
Private Collection, Quebec

Exhibited:

Literature:

Starting Bid: \$6,000 CDN

Estimate: \$8,000 ~ \$12,000 CDN

Preview at: Heffel Montreal



**726**

JOHN GEOFFREY CARUTHERS LITTLE

ARCA 1928 - Canadian

**Flaque d'eau - rue Eleanor vers William St. - Griffintown**

oil on canvas

signed and on verso titled and dated 1978 and inscribed "Irish Griffintown has been phased out of existence by the indifferent Philistines of City Hall" and "78-205"

24 x 30 inches 61 x 76.2 centimeters

Provenance: Private Collection, Ontario

Exhibited:

Literature:

Starting Bid: \$10,000 CDN

Estimate: \$12,000 ~ \$16,000 CDN

Preview at: Heffel - 13 Hazelton Ave Toronto



**727**

JOHN GEOFFREY CARUTHERS LITTLE

ARCA 1928 - Canadian

### **Osborne W., Montreal**

oil on board

signed and dated 1955 and on verso titled on the gallery label and inscribed indistinctly  
24 x 30 inches 61 x 76.2 centimeters

Provenance: Watson Art Galleries, Montreal  
Private Collection, Montreal

Exhibited:

Literature:

In 1962, Osborne Street in Montreal was renamed as De la Gauchetière Ouest. This painting depicts buildings that still exist today, such as St. Georges Anglican Church and Windsor Station.

Starting Bid: \$13,000 CDN

Estimate: \$15,000 ~ \$25,000 CDN

Preview at: Heffel Montreal



**728**

JOHN GEOFFREY CARUTHERS LITTLE

ARCA 1928 - Canadian

### **Rue Notre-Dame d'autrefois**

oil on canvas board

signed and on verso titled  
10 x 12 inches 25.4 x 30.5 centimeters

Provenance: Private Collection, Montreal

Exhibited:

Literature:

Starting Bid: \$6,000 CDN

Estimate: \$8,000 ~ \$12,000 CDN

Preview at: Heffel Montreal



**729**

**JOHN GOODWIN LYMAN**

CAS CGP EGP FRSA 1886 - 1967 Canadian

**The Cliffs of Cedarville**

oil on canvas board

signed and on verso titled and inscribed "E-2630" and "2916"  
18 x 29 7/8 inches 45.7 x 75.9 centimeters

Provenance: Dominion Gallery, Montreal  
Atelier J. Lukacs, Montreal  
Private Collection, Montreal

Exhibited:

Literature:

On John Lyman's return to Canada from France in 1931, he had a considerable impact on the Quebec art scene. In 1939, he founded the Contemporary Art Society of Montreal, and he was a co-founder of the group Atelier. After living in Europe, he had a cosmopolitan view, which he disseminated in articles on art for The Montrealer. In 1949, he became a professor at McGill University, ultimately becoming director of its Fine Arts Department.

In 1954, Lyman began summering in Massachusetts in locations such as Cape Cod, where Cedarville Landing is located. He spent the summer of 1957 there, and also the fall of 1958, when he was filmed by the National Film Board for the television series Profils et passages. Works such as this beautiful, dreamy scene connect with the tradition of atmospheric scenes of leisure portrayed by French Impressionists such as Claude Monet and Lyman's friend James Wilson Morrice. The concept of spending pleasurable summer holidays at the seaside is a modern one, and Lyman embraced this subject, painting beach scenes in locations ranging from France and Spain to the Caribbean and North America.

Starting Bid: \$13,000 CDN

Estimate: \$15,000 ~ \$25,000 CDN

Preview at: Heffel Montreal



**730**

**JIM MCKENZIE**

1953 - Canadian

**Jet Over Saltspring**

oil on canvas

signed and dated 1994  
69 x 46 inches 175.3 x 116.8 centimeters

Provenance: Private Collection, Vancouver

Exhibited:

Literature:

Starting Bid: \$2,750 CDN

Estimate: \$4,000 ~ \$6,000 CDN

Preview at: Heffel Vancouver





**731**

JIM MCKENZIE

1953 - Canadian

**Untitled Landscape**

pastel on paper

signed

20 1/2 x 30 1/2 inches 52.1 x 77.5 centimeters

Provenance: Private Collection, Vancouver

Exhibited:

Literature:

Starting Bid: \$500 CDN

Estimate: \$1,000 ~ \$1,500 CDN

Preview at: Heffel Vancouver



**732**

JOSEPH NORRIS

1925 - 1996 Canadian

**Cormorant and Seagulls at Sunset**

enamel on board

signed and dated 1993 and on verso titled

14 x 24 inches 35.6 x 61 centimeters

Provenance: Houston North Gallery, Nova Scotia

Private Collection, USA

Sold sale of Fine Canadian Art, Heffel Fine Art Auction House, November 26, 2011, lot 532

Private Collection, Toronto

Exhibited:

Literature:

Please note: this work is in the frame painted by the artist.

Starting Bid: \$2,000 CDN

Estimate: \$3,000 ~ \$5,000 CDN

Preview at: Heffel - 13 Hazelton Ave Toronto



**733**

ROSS PENHALL

1959 - Canadian

### Departure

oil on canvas

signed and on verso signed, titled and inscribed "1143"

20 x 60 inches 50.8 x 152.4 centimeters

Provenance: Arts Umbrella, Vancouver  
Private Collection, Vancouver

Exhibited:

Literature:

Please note: this work is unframed.

Starting Bid: \$7,500 CDN

Estimate: \$10,000 ~ \$15,000 CDN

Preview at: Heffel Vancouver



**734**

WALTER JOSEPH (W.J.) PHILLIPS

ASA CPE CSPWC RCA 1884 - 1963 Canadian

### The Pool at Johnson's Canyon

watercolour on paper

signed and dated 1954 and on verso titled "The Pool" on the exhibition label

18 1/2 x 24 inches 47 x 61 centimeters

Provenance: Acquired directly from the Artist by Donald Cameron, director of the Banff School of Fine Arts from 1936 - 1969  
By descent to the present Private Collection, British Columbia

Exhibited: Royal Canadian Academy of Arts, 1957

Literature: Roger Boulet, Walter J. Phillips: The Turbulence and the Tranquility, 1981, pages 158 and 159

This fine watercolour by Walter J. Phillips was originally acquired by Donald Cameron and passed down through his family. Cameron founded the Banff Arts Centre in 1936, and was the director there until he retired in 1969. Cameron and his family were neighbours and friends with the Phillips family when they lived in Banff. Phillips joined the Banff Summer School as an instructor in 1940, and continued teaching there until 1949, taking his students out into the landscape in good weather to sketch on the spot. In 1946, he built a home in Banff, and he produced a fine body of work based on the stunning Rocky Mountain scenery there. Roger Boulet wrote, "Walter loved Banff. The house on a lower flank of Tunnel Mountain overlooked the town and the Bow Valley and faced the setting sun...Of all sketching locations, Phillips preferred the 'West Road,' a paved road meandering along the Vermillion Lakes, west of Banff, and leading eventually to Johnson's Canyon."

Cameron was also a well known politician, who was appointed to the Senate in 1955.

Starting Bid: \$7,000 CDN

Estimate: \$10,000 ~ \$15,000 CDN

Preview at: Heffel Vancouver



**735**

CLAUDE A. SIMARD  
RCA 1943 - 2014 Canadian

### **Les vacances**

acrylic on canvas

signed and dated 2007 and on verso signed, titled and dated  
18 x 36 inches 45.7 x 91.4 centimeters

Provenance: West End Gallery, Victoria  
Private Collection, Vancouver

Exhibited:

Literature:

Starting Bid: \$2,500 CDN

Estimate: \$3,000 ~ \$5,000 CDN

Preview at: Heffel Vancouver



**736**

CLAUDE A. SIMARD  
RCA 1943 - 2014 Canadian

### **Iris de Toscane**

acrylic on canvas

signed and dated 2007 and on verso signed, titled and dated  
30 x 36 inches 76.2 x 91.4 centimeters

Provenance: West End Gallery, Victoria  
Private Collection, Vancouver

Exhibited:

Literature:

Starting Bid: \$4,000 CDN

Estimate: \$5,000 ~ \$7,000 CDN

Preview at: Heffel Vancouver



**737**

MIYUKI TANOBE  
RCA 1937 - Canadian

### **Maisonneuve, Montreal**

nihonga on board

signed and on verso signed, titled, dated 1995-07-11 and inscribed "De la Montagne"  
12 x 16 inches 30.5 x 40.6 centimeters

Provenance: West End Gallery, Montreal  
Private Collection, Ontario

Exhibited:

Literature:

Please note: this work is accompanied by the book titled Tanobe by Léo Rosshandler, published by Éditions Marcel Broquet, 1988.

Starting Bid: \$6,000 CDN

Estimate: \$8,000 ~ \$10,000 CDN

Preview at: Heffel Montreal



**738**

MIYUKI TANOBE  
RCA 1937 - Canadian

**Famille Latour**

nihonga on board

signed and on verso signed, dated 10 June 1978 and inscribed "à Marguerite, Roger Latour et toute la famille avec tout mon bon souvenir"

24 x 29 1/2 inches 61 x 74.9 centimeters

Provenance: Acquired directly from the Artist  
By descent to the present Private Collection, France

Exhibited:

Literature:

Starting Bid: \$8,000 CDN

Estimate: \$10,000 ~ \$15,000 CDN

Preview at: Heffel Montreal