

Online Auction Catalogue

Lot #321
BETTY ROODISH GOODWIN
CPE OC 1923 - 2008 Canadian



Shirt Two

etching on paper,
signed, editioned Proof and dated 1-1970 and on verso inscribed "BG-E-1970-17"
and "SH.005" and stamped Studio Betty Goodwin
27 1/2 x 21 3/4 in, 69.8 x 55.2 cm

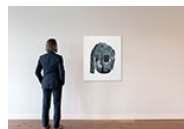
[More details about this lot](#)

Estimate: \$3,000 ~ \$5,000 CAD

Final Bid: \$5,000 CAD

[Condition report](#)
[View Heffel's Top Results by this artist](#)

[Currency converter](#)
[Shipping calculator](#)



CURRENT AUCTION

This sale is closed for bidding.

PAGES

01 02 03



Search by: Betty Goodwin | A Selection of Prints from the Estate
Found: 24 works
Showing works: 21 through 24

NEW SEARCH

- Post-War & Contemporary Art
- Made in Ontario featuring Painters Eleven
- Quebec Abstraction
- Betty Goodwin | A Selection of Prints from the Estate
- Contemporary Canadian: Property from an Important Vancouver Collector
- West Coast Modern & Contemporary Prints | Photographs | Sculptures
- Framing the Figure

Search by Artist
----- Select One -----

Search by Country
----- Select One -----

Search by Preview location
----- Select One -----

Go to Lot#

Sort by
----- Select One -----

Lot #322
BETTY ROODISH GOODWIN
CPE OC 1923 - 2008 Canadian



Shirt IV

etching on paper,
signed, titled, editioned Artist Proof 4/5 and dated 1971 and on verso inscribed "BG-E-1971-08" and "SH.002" and stamped Studio Betty Goodwin
31 1/4 x 23 1/2 in, 79.4 x 59.7 cm

[More details about this lot](#)

Estimate: \$3,000 ~ \$5,000 CAD

Final Bid: \$7,000 CAD

[Condition report](#)
[View Heffel's Top Results by this artist](#)

[Currency converter](#)
[Shipping calculator](#)

RELATED LINKS

- Bidding Hotlist
- My Bids
- Register to Bid
- Shipping
- Terms and Conditions
- Catalogue Terms and Abbreviations
- Frequently Asked Questions

Although great care has been taken to ensure the accuracy of the information posted, errors and omissions may occur. All acquisitions are subject to our Terms and Conditions of Business.

All prices are in Canadian Dollars.



Lot #323
BETTY ROODISH GOODWIN
CPE OC 1923 - 2008 Canadian

Gloves



monotype on paper,
signed, dated 9-1971 and inscribed "Monotype" and on verso inscribed "BG-E-1971-05" and "GL.030" and stamped Studio Betty Goodwin
20 x 26 in, 50.8 x 66 cm

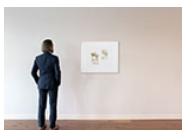
[More details about this lot](#)

Estimate: \$3,000 ~ \$5,000 CAD

Final Bid: \$2,000 CAD

[Condition report](#)
[View Heffel's Top Results by this artist](#)

[Currency converter](#)
[Shipping calculator](#)



Lot #324
BETTY ROODISH GOODWIN
CPE OC 1923 - 2008 Canadian

Parceled Landscape

etching, watercolour and postage stamps,
signed, titled and dated 1970 and on verso inscribed "BG-E-1970-23" and "P.003"
and stamped Studio Betty Goodwin
13 1/2 x 16 3/4 in, 34.3 x 42.5 cm



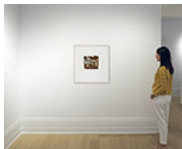
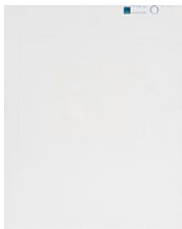
More details about this lot

Estimate: \$2,000 ~ \$3,000 CAD

Final Bid: \$1,600 CAD

Condition report
View Heffel's Top Results by this artist

Currency converter
Shipping calculator



◀ Prev. page 01 02 03

- Search
- Bidding hotlist
- Sign up
- History
- Join Heffel's client database
- Auction Terms & Conditions
- heffel.ca Terms & Conditions

- Forms
- Services
- Shipping
- Wanted works
- Archived auctions
- Valuations and Appraisals

- Calendar
- Artist records
- Streaming video
- Publications

Paddle Number:

Password:

Login